

CHAPTER 9

KEY ISSUES FOR SEA IN THE GEOTHERMAL ENERGY SUB-SECTOR

9.1 EXISTING SEA GUIDANCE/GUIDELINES FOR THE GEOTHERMAL ENERGY SUB-SECTOR

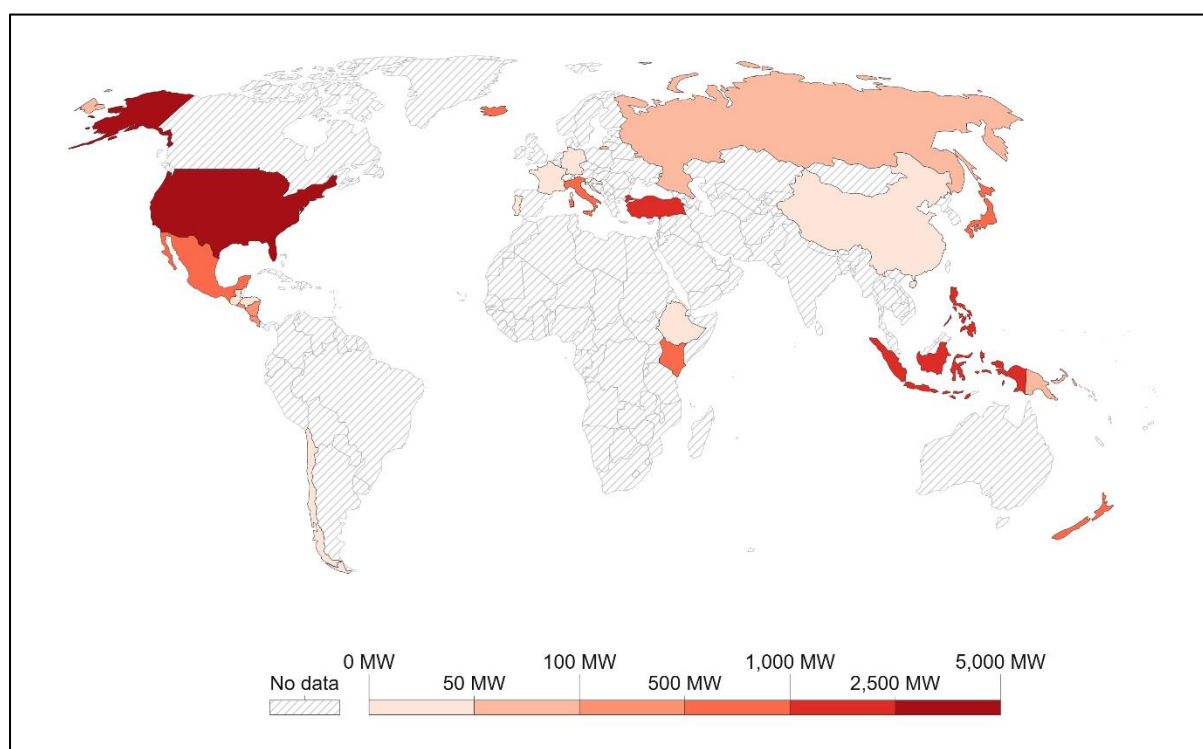
An international survey of existing SEA guidelines conducted for the IAIA was unable to identify any that are specifically focused on the geothermal power sub-sector. Similarly, no guidelines specific to EIA for geothermal energy development projects have been identified.

Some international agencies have produced guidance on environmental and social issues related to geothermal energy generation¹ and various sources discuss the environmental impacts of geothermal energy².

9.2 GEOTHERMAL ENERGY INSTALLED CAPACITY

The installed capacity of geothermal energy has gradually increased worldwide over the last decade, reaching 14,075 MW in 2020³ (Table 9.1). Figure 8.1 shows the global distribution of installed capacity. The top 10 countries in 2020 are listed in Table 9.2.

Figure 9.1: Installed geothermal energy capacity, 2020



Source: www.ourworldindata.org, based on BP (2021)

¹ e.g., IFC (2007)

² e.g., CEI (2019); Energysage (2019); UCS (2013b); [Bošnjaković et al. \(2019\)](#)

³ www.ourworldindate.org

Table 9.1: Installed geothermal energy capacity, 2020Source: www.ourworldindate.org

Region	Installed capacity (MW)
World	14,075
Africa	831
Asia-Pacific	5,650
Europe	3,265
North America	3,493
South & Central America	762

Table 9.2: Top 10 geothermal countries, 2020Source: www.geothermalenergy.com

Country	Installed capacity (MW)
USA	3,714
Indonesia	2,133
Philippines	1,918
Turkey	1,688
New Zealand	1,005
Mexico	963
Italy	944
Kenya	861
Iceland	755
Japan	603
Other	1,025

9.3 BACKGROUND TO GEOTHERMAL ENERGY GENERATION

Geothermal energy is generated in countries located on or near seismically and volcanically active tectonic plate boundaries.

Geothermal power plants operate by extracting the Earth's heat in the form of steam or hot water which, in turn, is used to drive a steam turbine and generate electricity. The geothermal energy is captured through drilling production wells deep into underground reservoirs and then extracting and piping the hot water and steam to a power plant where it drives a turbine. This technology requires cooling towers or air-cooled condensers to cool the steam used to drive the steam turbine. Steam is released to the atmosphere in this process. Wastewater effluents and gases are typically reinjected into the reservoir or its periphery to minimize the potential for groundwater contamination⁴.

An example of a geothermal power plant is the 330 MW Sarulla plant geothermal power plant in Sumatra, Indonesia⁵ (Figure 9.1) (see also Box 9.1).

⁴ IFC. 2007. *Geothermal Power Generation environmental, health and Safety Guidelines. Annex A: General Description of Industry Activities*. Washington, DC.

⁵ Sarulla. [Overview - Sarulla Operation Ltd. \(sarullaoperations.com\)](http://sarullaoperations.com)

Figure 9.1: Sarulla Geothermal Plant, Indonesia

Figure redacted pending securing copyright permission to use. If you have an image of this plant that you can provide (with permission to use – please indicate the credit to cite) we would be delighted if you can send it.

Unlike solar and wind energy, geothermal energy is constantly available. Hence, it provides both baseload power and firming power⁶ for when variable renewable energies (e.g., wind or solar) are unavailable.

The environmental and social effects of geothermal energy are dependent on how and where geothermal energy is extracted. Access roads and transmission lines are required to be constructed, often in areas that have had little or no previous development. Other infrastructure such as workers camps may be required.

During operation, freshwater may be required to cool exhaust gases (before they are passed through amine scrubbers to reclaim the amine solvents) and for cooling towers. Projects may have a wastewater treatment plant located within the production complex. Processed wastewater from exhaust gas washing and reverse osmosis plants and cooling tower wastewater are all directed to a wastewater treatment plant for treatment prior to discharge to a public sewage system, where this exists⁷. Storm water from handling areas from the production complex needs to be drained through a sedimentation trap drain to an oil and grease separator, after which it might be discharged to natural waterways⁸.

9.4 IMPACTS OF GEOTHERMAL ENERGY DEVELOPMENT

Table 9.3 summarises the key environmental and socio-concerns concerns likely to be associated with geothermal energy development.

⁶ Matek and Gawell (2015)

⁷ Englande *et al.* (2015)

⁸ Meland (2016)

Table 9.3: List of key environmental and socioeconomic issues for solar power

ISSUE	COMMENT
Environmental	
Habitats and biodiversity	<ul style="list-style-type: none"> • Land clearing for well pads and access roads • Fragmentation of habitat from access roads and transmission lines • Increased poaching and hunting due to increased access to areas and introduction of workforce into an area • Risks to birds/bats from collision with overhead power lines.
Protected areas	<ul style="list-style-type: none"> • Geothermal sites may be close to or within protected areas • Many geothermal sites are in remote and sensitive ecological areas • Improved access, roads, and transmission lines increase vulnerability of protected areas
Air quality	<ul style="list-style-type: none"> • Geothermal power plant emissions are negligible in comparison to fossil fuel-based power plants • Some small amounts of carbon dioxide are found in plant steam and site vents can also produce very small levels hydrogen sulphide emissions. • Well emissions in open-loop systems include sulphur dioxide, hydrogen sulphide, carbon dioxide, ammonia, methane, and boron • Some geothermal plants also produce small amounts of mercury emissions, which must be mitigated using mercury filter technology. Scrubbers can reduce air emissions, but they produce a watery sludge composed of the captured materials, including sulphur, vanadium, silica compounds, chlorides, arsenic, mercury, nickel, and other heavy metals. This toxic sludge often must be disposed of at hazardous waste sites
Water quality	<ul style="list-style-type: none"> • Chemical pollution of surface water and groundwaters. Hot water pumped from underground reservoirs often contains high levels of sulphur, salt, and other minerals—can affect local water quality if not a closed-loop system (water pumped directly back to geothermal reservoir after it has been used for heat or electricity production). Surface water used by geothermal plants is normally returned to the original source with some increase in heat • Fluids used during drilling activities may be water- or oil-based and may contain chemical additives. Cuttings from oil-based mud may have high oil-related contaminants in effluent • Rejected water from geothermal separators may contain heavy metals • Well blowouts can result in the release of toxic drilling additives and fluids, as well as hydrogen sulphide from underground. • Pipeline failures can result in the surface release of geothermal fluids and steam containing heavy metals, acids, mineral deposits, and other pollutants
Greenhouse gases	<ul style="list-style-type: none"> • Geothermal energy can reduce GHG emissions where it displaces coal as a fuel source
Waste	<ul style="list-style-type: none"> • Geothermal power plants produce a relatively minimal amount of waste. But there is potential for leaching of silica compounds, chlorides, arsenic, mercury, vanadium, nickel, and other heavy metals which may be classified as hazardous
Water use	<ul style="list-style-type: none"> • Geothermal plants can require between 1,700 and 4,000 gallons of water per megawatt-hour • Open-loop systems can require a large amount of water (with over exploitation of available resources); closed-loop systems return the water to the underground source
Soil erosion	<ul style="list-style-type: none"> • From clearing of vegetation and construction of access roads
Noise	<ul style="list-style-type: none"> • Noise from well exploration (installation, testing), construction machinery and vehicles, and maintenance activities during operation
Earthquake risk	<ul style="list-style-type: none"> • Hydrothermal plants are sited on geological “hot spots,” which tend to have higher levels of earthquake risk

ISSUE	COMMENT
Visual and aesthetic value	<ul style="list-style-type: none"> The visual amenity of the landscape will change. This may reduce appeal of the area to tourists, but may create opportunities for industrial tourism (visits to facility)
Socioeconomic	
Local economy and livelihoods	<ul style="list-style-type: none"> Relocation of people and their structures Increased pressure on the host communities' public services People displaced from their economic activities, such as rice cultivation Loss of income from fishing activities, rice cultivation, and other farming activities, damage to crops from discharges Loss of income from small business and enterprise activities due to acquisition of land by energy companies Conflict between communities and geothermal energy companies over land ownership Negative impact on indigenous communities and their traditional or customary land and resources
Gender and vulnerability	<ul style="list-style-type: none"> Vulnerable groups (e.g., the poor, women, persons with disabilities, children, the elderly, and indigenous communities) may be disadvantaged and at particular risk Gender-based violence and human trafficking resulting from an influx of predominantly male construction workers Employment opportunities within new projects Opportunities for vulnerable groups to acquire new skills and learn new technologies
Cultural heritage	<ul style="list-style-type: none"> Loss of religious, historical and archaeological sites and properties Cultural heritage may be destroyed or damaged due to transmission lines and access roads Limited access to cultural heritage sites
Employment and labour conditions	<ul style="list-style-type: none"> Employment in the construction and operation phases of projects and associated businesses and activities Substandard working conditions Worker safety Workers have the opportunity to learn new skills
Health and safety	<ul style="list-style-type: none"> Nearby communities may be exposed to air pollution including hydrogen sulphide gas General hazards for local communities may include contact with hot components, equipment failures, and presence of active or abandoned wells. Short-term disruptions such as traffic, road, influx of population, noise, vibration, odour and steam
Public services and infrastructure	<ul style="list-style-type: none"> Infrastructure (e.g., roads, bridges, schools, health centers, and administrative buildings) may be improved due to community investment by geothermal energy companies Pressure on public services and infrastructure will increase as a result of immigration Heavy vehicles and transportation damage existing roads and bridges Increased vehicle traffic during construction

9.4.1 Environmental issues and impacts

Habitats and biodiversity⁹

The location of geothermal power projects is predominantly selected based on geological conditions that are suitable for the highest yield of geothermal energy. Such locations may occur in natural habitats (which can sometimes be critical habitats) such as the dense forests of Sumatra in Indonesia. Alternatively, they could be within modified habitats such as plantations or rice fields, which may still harbour significant biodiversity value. It is common that forests and vegetation need to be cleared by heavy machinery to allow for the construction of the required infrastructure such as well pads, power plants, cooling towers, pipes, access roads, transmission lines, and other associated facilities.

The clearing results in direct loss of habitat and displaces the fauna (which can include protected and threatened species) that depend on it. Fauna are forced to seek alternative suitable habitats in other areas of the forest, if available. This has a knock-on effect as the displaced individuals may cause an increase in competition for resources in such other areas, or out-compete other less dominant species. There can also be road kills due to collisions with construction vehicles on access roads.

Significant long-term impacts on biodiversity typically arise from the development of access roads and transmission line easements due to habitat fragmentation. This occurs when an area of habitat that was originally “whole” before the development becomes divided into multiple areas due to partitioning. For fauna species, fragmentation creates a barrier effect by limiting or preventing their movements to areas of the habitat that they would have previously accessed for food, shelter, or breeding grounds. Arboreal species (i.e., those that almost exclusively move in the tree canopy), small mammals and slow-moving species are particularly vulnerable to habitat fragmentation.

In the long term, once forests have been permanently fragmented, the gene pool of both flora and fauna species tends to be less diverse, and more vulnerable to unpredictable and chance events such as lightning strikes and floods. The creation of access roads through a forest also introduces an ‘edge effect’, where micro-climates become permanently modified, and plant species struggle to survive when exposed to an increased amount of sunlight. Access roads also increase the risk of introducing invasive species.

Access roads constructed through a once undeveloped and relatively inaccessible area can also lead to an increase in illegal hunting or poaching of wildlife, as well as an increase in illegal harvesting of timber and other forest products.

Wildlife can also be displaced from their habitat near a geothermal development due to construction noise such as vehicles and drill rigs, but also noise from operations (vehicles and plant)¹⁰. Similarly, floodlighting at a geothermal power plant site can also cause the displacement of wildlife species that are not able to tolerate such changes in their environment and can force them to seek other habitats, potentially displacing less dominant species and increasing competition for resources and shelter.

Sulphur emissions from geothermal plants can hinder the growth of vegetation around the site.

Once a geothermal well pad has been established, it is usually tested for its viability and yield. More often than not, some well pads will be unviable, and more drilling than initially planned will be required. In some cases, a well pad is decommissioned or abandoned altogether. Typically, the original planned footprint of a geothermal power project will be subject to change and may increase in area with greater loss of habitat than originally envisaged.

The development of multiple geothermal projects across a region would amplify the negative effects on habitats and biodiversity, potentially resulting in a significant cumulative displacement or loss of biodiversity, even though the impacts of the individual projects may be limited.

⁹ Ng et al. (2021)

¹⁰ ADB (2017)

The loss of biodiversity and habitat, or the alteration of the ways in which species can utilize the habitat, can disrupt and unbalance the overall function of the original ecosystem and can result in additional loss of some species and ecosystem services¹¹.

These issues need to be assessed and mitigation measures identified (Box 9.1).

Box 9.1: Sarulla geothermal power plant, Indonesia

The Sarulla Geothermal Project in Indonesia (Figure 9.1) was developed in an area of high biodiversity value. It was found to pose several risks to high value habitats and biodiversity including:

Loss of connectivity between habitats due to the creation of access roads through habitat;

Deaths to fauna species from collisions with vehicles;

Increase in hunting or poaching of threatened species;

Clearing of habitat for project components including well pads;

A Critical Habitat Assessment and Biodiversity Action Plan was developed for the project to mitigate the risks. The Biodiversity Action Plan recommended actions to be undertaken by the project company including: designing road crossing for primates, raising community and workforce awareness about the value of the habitats and species in the area, and implementing speed limits to avoid collisions with fauna species.

Source: ADB (2019); ADB (2020)

Protected areas

There is a risk that geothermal developments could be in or near protected areas such as national parks to make the most of the available geothermal resource. In some areas, it is difficult to avoid encroaching on protected areas to create wells for a development or to construct an access road or a transmission line to export the energy to the electricity grid. The terrain on fault lines is generally steep and, in some instances, the only feasible access route to get to the geothermal resource may be to traverse a portion of a protected area.

Similarly, in some instances, routing a transmission line through a portion of a protected area may be the most cost-effective or only feasible technological solution open to a development's design.

Encroachment into protected areas results in direct habitat loss and fragmentation of habitat (see previous section). However, the impacts can be even more significant as protected areas are intended for conservation purposes and, as such, host a range of protected flora and fauna species that may not exist in significant numbers elsewhere and these species may be particularly sensitive to disturbance and human presence. Thus, encroachment into protected areas can lead to a loss of high value biodiversity.

A geothermal energy development may inadvertently increase access to protected areas, even if the development or its associated infrastructure is not actually located within the protected area. This can lead to degradation of the protected area by enabling illegal take of wood or other resources from the protected area as well as increasing the opportunity for illegal poaching.

¹¹ IFC (2012d); ADB (2019 and 2020)

Air quality

In closed-loop geothermal energy systems, gases removed from a well are not released to the atmosphere but are injected back into the ground after giving up their heat, so air emissions are minimal. In contrast, open-loop systems emit hydrogen sulphide, CO₂, ammonia, methane, and boron¹².

Once in the atmosphere, hydrogen sulphide changes into sulphur dioxide (SO₂) which can have a strong odour when emitted in high concentrations. This contributes to the formation of small acidic particulates that can be absorbed by the bloodstream and cause heart and lung disease. At high enough levels (1,000 parts per million by volume [ppmv]), sulphur dioxide can cause death¹³. Sulphur dioxide also causes acid rain, which damages crops, forests, and soils, and acidifies lakes and streams. However, SO₂ emissions from geothermal plants are approximately 30 times lower per megawatt-hour than from CFPPs¹⁴.

Emissions of hydrogen sulphide from geothermal power plants can cause odour annoyances among members of the exposed public - some of whom can detect this gas at concentrations as low as 0.002 parts per million by volume¹⁵.

Some geothermal plants also emit small amounts of mercury, which must be mitigated using mercury filter technology such as “scrubbers” or air filters. This is generally due to the nature of the local environment, i.e., thermal waters can naturally contain mercury and arsenic. For instance, a study in West Java showed that thermal waters could naturally contain up to 2.6 ppm arsenic (As) and 6.5 ppb mercury (Hg), and the surface hydrothermal alteration could contribute up to 50 ppm As and 800 ppb Hg.

However, geothermal power plant emissions are negligible compared to those of fossil fuel combustion-based power plants. For example, geothermal power plants emit approximately 1% of the sulphur oxide (SO_x) and nitrogen oxide (NO_x), and 5% of the CO₂ emissions of a coal-fired thermal power plant of similar power generation capacity¹⁶.

Scrubbers can reduce air emissions of mercury, but they produce a watery sludge composed of the captured materials, including sulphur, vanadium, silica compounds, chlorides, arsenic, mercury, nickel, and other heavy metals. This toxic sludge must be disposed at hazardous waste sites.

Local air quality can also be affected during construction due to emissions from construction vehicles and the creation of dust. Occupational exposure to geothermal gases (mainly hydrogen sulphide) may occur during non-routine release of geothermal fluids (e.g., due to pipeline failures) and maintenance work in confined spaces such as pipelines, turbines, and condensers. The significance of the hydrogen sulphide hazard may vary depending on the location and geological formation particular to the facility.

Water quality

Closed-loop geothermal systems have few impacts on water quality as most of the extracted water is returned to the underground source via a second well, so there are little or no discharges to the environment. However, in open-loop systems, there can be risks associated with the discharge of geothermal water to the environment. Such water (brine) extracted from underground reservoirs often contains high levels of sulphur, salt, and other minerals that can negatively affect water quality of the water body or waterway that it is discharged to and/or if there is runoff downstream. In turn, this can lead to a deterioration or alteration (even loss) of aquatic habitat as well as effects on downstream users of the water. There have also been instances when steam emissions from the geothermal energy process have corroded building roofs and damaged crops of nearby communities.

¹² Kagel *et al.* (2005)

¹³ Layton *et al.* (1981)

¹⁴ UCS (2013b) y

¹⁵ Layton *et al.* (1981)

¹⁶ Duffield and Sass (2003)

Under both open- and closed-loop systems, there are risks that construction and operation activities will have a negative impact on water quality because of soil erosion and subsequent sedimentation of waterways (see section on soil erosion) or may result in accidental hazardous waste discharges (see next section).

Accidental spills of contaminants and geothermal fluids can occur during the drilling and construction stages which can have a negative impact on surface water quality¹⁷.

If not well managed, polluted runoff from well pads and ponds, especially during rainy season floods, can also affect water quality.

Waste

The biggest source of solid waste on a geothermal project is the earthen material (soil, rock, mud) extracted during the drilling process. This is temporarily stored in drill pits and mud from the drilling process is stored in temporary mud pits¹⁸. The material then needs to be transported to landfill if an option for reuse is not available.

Other construction waste streams would include:

- Material from packaging,
- Building materials,
- Scrap metals,
- Excess soil material,
- Plastic and masonry products,
- Cleared vegetation,
- Sanitary wastes,
- Empty chemical storage containers, and
- Concrete wash out water.

These wastes can pose a risk to water and soil quality and put pressure on landfill if not managed appropriately.

Water use

Closed-loop systems recapture the steam of the geothermal water after it has driven the steam turbine, condense it back to water via a cooling process and return the water to the ground via a second well. This means that almost all of the water is returned to the underground source. Nevertheless, there are some water losses (approximately 2%) from evaporation and 'blow down'¹⁹. However, in the less common open-loop systems, the geothermal water is not returned to source. Some is lost as steam through the cooling process, but the remainder is condensed and transferred to large-scale cooling ponds and subsequently discharged (e.g., to a marine or fresh water environment).

In the drilling stage of geothermal power plants, high volumes of surface water are required and are usually taken from nearby rivers or lakes, if accessible. In Southeast Asia, there is often sufficient surface water availability in the wet season but not in the summer dry season²⁰.

Similar to thermal power plants, geothermal plants also require a source of cooling water that is separate to the geothermal resource. This water could come from either a freshwater or groundwater source and typically would draw approximately 9000 litres per megawatt-hour (MWh)²¹. Depending on

¹⁷ World Bank (2017)

¹⁸ ADB (2019)

¹⁹ Blow down refers to a process whereby some water from the cooling system is purposely released and new cooling water added to the system to avoid a build-up of minerals such as salts in the cooling system to avoid corrosion.

²⁰ Alamsyah *et al.* (2020)

²¹ USDE (2006)

the availability of water resources in an area, this can lead to excess demand on local water resources which reduces freshwater available to local communities and for livestock and crops. This can be a particular problem for communities in the dry season.

The condensate from the steam cycle is used in the cooling system. Approximately 70% of the water is evaporated by the cooling tower²¹. Alternatively, air-cooled condensers may be used. These use large-scale fans to generate a flow of cool air to condense the steam to water. Such condensers do not require a water source to operate, but they create noise (see section on noise).

Soil erosion

Soil erosion can occur when land is cleared for geothermal project components, access roads, and transmission lines. Large volumes of soil can be excavated for levelling well pads and creating access roads²². This removal of vegetation (particularly roots) decreases soil stability.

High rainfall events are common in Southeast Asia and can cause exposed soils to wash away, leading to sedimentation of nearby waterways. This can reduce water quality and result in alteration or loss of habitat for aquatic species. Soil erosion can also lead to localized landslips, a health and safety risk for communities (see section on health and safety).

Noise and vibration

The development of a geothermal energy facility involves several construction and commissioning phases that may produce adverse levels of noise and vibration:

- Steamfield development involves drilling geothermal wells - producing noise and vibration from drilling and well-testing activities, mud pumps, compressors, hydraulic pumps, and generators;
- Purging geothermal wells to remove debris involves a vertical discharge generating a very high noise level. However, this is typically for only a few hours. Few mitigation options are available, apart from shielding the well outlet and scheduling the activity to periods with a lower risk of intrusion (such as during a weekday);
- General construction noise and vibration impacts from construction of the power plant, support infrastructure and site office buildings. The equipment transported to site can be very large, causing temporary nuisance noise and vibration in the communities through which it is transported; and
- During operation of a facility, the main sources of noise will likely include noise from high flow steamlines, traps installed in supply lines, steam vents, well maintenance and electricity generation plants.

Earthquake risk

Geothermal plants are in seismically active areas where earthquakes are likely to occur. In general, geothermal projects themselves are not considered to generate any significant seismic risk. However, there have been some examples of geothermal projects inducing micro-seismic events (by drilling in rock creating “shearing” or fractures) at a localized level that may be perceptible by and impact on nearby communities²³ (**Error! Reference source not found.9.2**). This risk is subject to ongoing research.

²² World Bank (2017)

²³ USDE (2007)

Box 9.2: Earthquake in Switzerland caused by a geothermal system

In 2006, a geothermal system in Switzerland caused a magnitude 3.4 earthquake in Basel, an area prone to natural earthquakes. No expert assessment had been conducted of how much the seismicity induced by the project would connect with the natural seismicity under the Basel area.

A court case seeking compensation for property damage was brought against the head of the company, Geothermal Explorer, which subsequently shut down the system.

Source: [Earthquake Concerns Shake Geothermal Energy Projects | Live Science](#)

Visual impacts

A gas flare, alternatively known as a flare stack, is a gas combustion device used in industrial plants such as petroleum refineries, chemical plants, natural gas processing plants as well as at oil or gas production sites having oil wells, gas wells, offshore oil and gas rigs and landfills. One of the main reasons for gas flaring is the disposal and burning of natural gas as waste, either for safety reasons, economic and technical reasons, or regulatory reasons. In some cases, for safety reasons, a geothermal project will undertake a ground flare to dispose of methane gas should the operation of engines be disrupted. Best practice is to use an enclosed ground flare. Flares would normally only be of short duration. Providing suitable technology choices are made, impacts on air quality are not expected to be significant. However, the visual amenity of the landscape will change. This may reduce the appeal of the area to tourists and local populations and could, depending on location, impact on property prices.

The development of a geothermal energy project and its associated pipelines can cause negative visual and spatial effects on the landscape (e.g., by altering vegetation and wildlife habitat²⁴). In some countries, geothermal energy is often located in protected areas where and the construction of the power plants, access road, transmission lines and other facilities tend to change the natural visual landscape and, ultimately, can undermine the attractiveness of the area for tourism²⁵.

However, geothermal resources often coincide with natural hot springs, presenting opportunities to develop tourism (Iceland is a prime example).

9.4.2 Socio-economic issues and impacts

Local economy and livelihoods

As with many other renewable energy developments, there are opportunities for local communities as well as a range of risks and possible impacts (some associated with access to land for drill rigs, well pads, access roads, pipe and transmission lines and other associated facilities required for geothermal energy projects).

The acquisition of land can create physical and economic displacement or both. The average area of land required for geothermal projects is smaller than for most other types of renewable energy (Box 9.3). The most land-intensive stage is the construction of well pads, power plants, and associated infrastructure. The building of access roads and storage facilities during earlier drilling stages may also cause short-term disturbances to the livelihood activities of affected communities and open-up areas with natural resources which previously were less accessible.

²⁴ Manzella *et al.* (2018).

²⁵ Soltani *et al.* (2021)

Because well pads generally have a small footprint, and associated infrastructure is linear or underground, often careful siting and design can help avoid or minimize physical displacement.

Land acquisition for geothermal exploration and exploitation is different from other renewable projects because there is more scope for the resource (geothermal energy) not being available. Often several wells need to be drilled to confirm presence of the geothermal resources, whereas modeling of wind and solar energy to determine sufficient yield can be undertaken through desktop work. The specific location of geothermal resources can therefore lead to more potential for disputes within communities over land ownership and sometimes over land compensation arrangements. Disputes about land ownership can cause community tension.

Box 9.3: Land required for geothermal energy projects

The US Geothermal Technologies Office estimates that an entire geothermal field uses 1-8 acres (0.4–3.2 hectares [ha]) per megawatt (MW) compared to 19 acres (7.7 ha) per MW for coal power plants.

The Asian Development Bank-financed 110MW Dieng (2) geothermal expansion project in Java, Indonesia, estimated the need for about 30.8 ha in total in various locations, mainly for the new pipelines and access road but also for the power plant and five well pads. According to the project's resettlement plan, the project will require 30.8 ha for five well pads and the power plant site. As the site is located in a fertile and intensively farmed area (Figure 11.2), the acquisition of land for the project will directly impact 106 persons (29 households) and indirectly affect four lease coordinators (21 persons) livelihood, particularly smallholders, tenants, and sharecroppers in the area.

Figure 9.2: Location of Dieng geothermal expansion project in Java, Indonesia

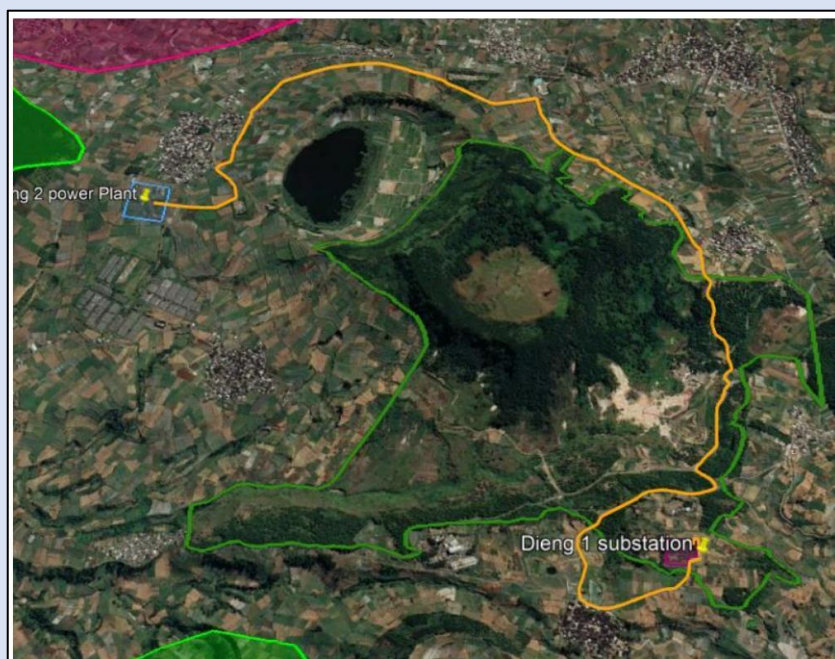


Image credit: Geothermal Technologies Office (undated); and ADB (2019b)

Conversely, geothermal projects can be built in harmony with other land uses and deliver livelihood benefits (

Box9.4).

Box 9.4: Livelihood benefits from geothermal energy

The website of the US Geothermal Technologies Office mentions 15 geothermal plants that are producing more than 400MW in one of the most productive agricultural areas, where land around the geothermal infrastructure is used for livestock grazing, agriculture and is adjacent to a national wildlife refuge.

Source: www.energy.gov/eere/geothermal/geothermal-technologies-office.

Other than the adverse impacts, geothermal projects could induce local business opportunities. As for other renewable technologies, local communities could provide services, such as accommodation for workers, retailing and other services for the geothermal companies and contractors. In 2000, the Gunung Salak geothermal project in Indonesia, located in the middle of a protected forest, won a prestigious environmental award for its well-planned community development program and responsible environmental management²⁶. In Iceland, the geothermal sub-sector provides a multitude of stakeholder benefits, such as participation in decision-making, job creation, and infrastructure upgrades, along with sustainable energy development, but there are trade-offs between pursuing an economically efficient energy system and nature conservation²⁷. Iceland has been able to stimulate new unforeseen industries alongside geothermal plants (Box9.5).

Box 9.5: New industries connected to geothermal energy in Iceland

Iceland has leveraged geothermal energy production to stimulate new industries, including data storage, greenhouse agriculture and ecotourism. Visitors to Iceland are drawn to the famous Blue Lagoon geothermal spa located in a lava field near Grindavik.

Engineers have begun to design power plants to accommodate tourists and have established geothermal-powered greenhouses, where local farmers produce tomatoes, cucumbers, and other crops that once had to be imported.

Source: *McMahon (2016)*

Occupational health and safety

As for other types of renewable energy projects, there are also occupational hazards, according to IFC geothermal health and safety guidelines, the occupational risks could include²⁸:

- Hazards from working in a confined space where entry by workers and the potential for accidents may vary among geothermal facilities depending on design, on-site equipment, and the presence of groundwater or geothermal fluids;
- Exposure to geothermal gases, mainly hydrogen sulphide, may occur during the non-routine release of geothermal fluids (for example, well blowout and pipeline failures) and during maintenance work in confined spaces such as pipelines, turbines, and condensers;

²⁶ Slamet and Moelyono (2000)

²⁷ Cook *et al.* (2022)

²⁸ IFC (2007)

- Exposure to heat during construction activities and the O&M of pipes, wells, and related hot equipment.

In the case of large-scale geothermal plants, many projects will be subject to the environmental and social safeguards of multilateral development banks (MDBs) and to the environmental and social risk management guidelines and procedures of the Equator Principles. These may provide a higher standard of, and oversight of, labour management procedures than the prevailing national standard.

Community health and safety

Geothermal projects bring health and safety issues for local communities. These can be induced by the exploration, construction and operational phases of a project. During the construction phase, communities will be exposed to short-term nuisances such as increased truck and vehicle movements, noise, vibration, and dust for those residing or working close to the project infrastructure sites as well as the influx of skilled workers, noise, and odour. Geothermal wastewater and gaseous emissions typically contain hydrogen sulphide and other non-condensable gases and may contain mercury, which can be emitted during geothermal well drilling and testing processes²⁹. These emissions are typically not significant, though this is dependent on the concentration of gases and the proximity of wells to sensitive receptors. Nearby communities may be exposed to air pollution including hydrogen sulphide gas, which has an odour and can be toxic³⁰. Geothermal wells need to have cement casings to prevent pollution of groundwater.

The health risks to communities include exposure to air pollution such as hydrogen sulphide gas, infrastructure safety and impacts on water resources³¹. Without proper management, the release of wastewater from the plants can cause adverse impacts on community health (e.g., skin and respiratory diseases), sanitation and smell.

Noise from gas engines, drilling, construction vehicles and power plant operation can cause disturbance and damage to local community and property (e.g., noise and traffic congestion can affect community tourism and homestays) and nearby infrastructure.

Gender and vulnerability

One of the social risk factors associated with geothermal energy development is the degradation of water quality and supply (discussed in section 9.3.1 – water quality). This may have a disproportionate impact on women and girls who tend to be the primary collectors of water for household use and may increase ‘time poverty’³² if longer travel to clean water sources is required. Other risks are associated with potential land acquisition and displacement, and resettlement planning and compensation procedures for geothermal projects. In addition, the development of geothermal projects may cause potential damage to, or restrict access to, areas of spiritual and cultural significance³³. This can have disproportionate impacts on women and vulnerable groups, particularly those from indigenous communities, and sometimes more than for other renewable energy technologies (see section on indigenous communities).

Other risks include the potential for an increase in gender-based violence (GBV) against women, and human trafficking resulting from an influx of predominantly male construction workers³⁴ and other male presence such as the military (Box 9.6). Concerns around an increased risk of GBV during renewable energy projects have also been discussed in other technologies (see discussion of gender and vulnerability in sections on hydropower and wind power).

²⁹ Finster (2015)

³⁰ Bastaffa *et al.* (2019)

³¹ IFC (2007)

³² Time poverty is the experience or feeling of having too much to do and not enough time to do it.

³³ World Bank (2019)

³⁴ World Bank (2019)

Box 9.6: Community opposition to the Chevron Geothermal Project, Philippines

In Kalinga, Philippines, indigenous women in Western Uma blocked development of a Chevron geothermal energy project, which caused the company to abandon the site. The women's grievances included: disregard for cultural beliefs linked to the resource; loss of tiger grass (an important cash crop for women); fear of gender-based violence (GBV) from an anticipated increase in military presence to protect assets at the project site; and unequal compensation and benefits for women, including scholarships and employment opportunities.

Source: World Bank (2019)

Furthermore, women who pursue professional careers in geothermal energy often face several barriers, such as social expectations about their roles and abilities and a lack of an inclusive workplace environment³⁵. As with other technologies, factors such as a skills gap among women due to their limited access and uptake of education and training in STEM subjects (see discussion of gender and vulnerability in Chapter 5 - hydrology) can also limit their employment opportunities in the geothermal industry.

Indigenous communities

Geothermal development may have a negative impact on indigenous communities and land under traditional or customary use. Geothermal plants are often located near volcanoes or hot water—sites that frequently have cultural, sacred, and spiritual value for local communities of indigenous people. The healing properties of the warm and sulphuric based water are often the subject of community lore.

Potential geothermal energy development sites tend to be located in remote areas where indigenous communities often reside (e.g., Figure 9.3)

9. They may be disproportionately affected by land acquisition and by opening up access to the natural areas and resources they depend on.

Figure 9.3: Muara Laboh Geothermal Project, Indonesia

Figure redacted pending securing copyright permission to use. If you have an image showing this project that you can provide (with permission to use – please indicate the credit to cite) we would be delighted if you can send it.

9

Sections addressing other types of renewable energy have highlighted that there is potential for local indigenous communities near to renewable energy projects to benefit from employment opportunities with the project, either during construction or operations. There is a risk that such employment opportunities will not be accessible to local indigenous people, e.g., because they lack qualifications or required skills and experience.

Cultural heritage

New geothermal developments can take place in or near sites that are protected or prized for cultural significance or aesthetic aspects, threatening or compromising the physical or visual status of the site³⁶. Such risks may be more pronounced among indigenous communities who frequent geothermal sites

³⁵ World Bank (2019)

³⁶ The World Bank (2019b)

for the sacred and healing properties they are believed to have. Such sites may also be in, or contain, fragile, or protected ecosystems with endangered species³⁷.

Research carried out at Olkaria geothermal fields in Kenya found that the development of geothermal projects led to a reduction in family size. This was linked to the gradual loss of community land to the project which impacted greatly on the preservation of local cultural heritage sites. Also, the local community complained about foreign cultural attitudes penetrating their culture and causing cultural conflicts because of the interaction with outsiders³⁸.

The preservation of cultural sites can help to increase their potential to attract tourism.

Employment and labour conditions

Geothermal energy development has the potential to offer some employment during both the construction and operations phases, providing the local community with the opportunity to acquire new skills. For instance, the ESIA for the 35 MW Casita geothermal project in Nicaragua estimated that the exploration phase (intended to be 2.5 years) would create 100 jobs for site preparation and 100 for drilling³⁹. Specialist skills are required for drilling. Skills gained in fossil fuel industries are transferable to geothermal development (e.g., drilling experts and construction-related roles). Figure 9.4 **Error! Reference source not found.** shows that, in 2021, there were almost 2 million jobs in the geothermal energy sub-sector, significantly fewer than in the other renewable energy sectors discussed elsewhere in this guidance.

Figure 9.4: Renewable energy employment by technology in 2021

Figure redacted pending securing copyright permission to use from IRENA. If you have an image showing this information (bar chart showing employment in different forms of renewable energy) that you can provide (with permission to use – please indicate the credit to cite) we would be delighted if you can send it.

Public services and infrastructure

As for other renewable energy types, geothermal energy projects can bring both opportunities and risks for public services and infrastructure under the remit of local public authorities. Heavy construction vehicles and transportation may damage existing roads or buildings adjacent to roads, especially bridges. Normally, energy projects will contribute to the development, improvement, upkeep and access to overall community facilities and services in an area. This may be because the project simply requires certain infrastructure and will put this in place, or alternately through its wider corporate social responsibility (CSR) programmes. The potential for community investment has been discussed previously for other renewable energy technologies.

Geothermal energy could create alternative employment opportunities for those who may have lost jobs or are at risk of unemployment due to transition away from non-renewable energy.

³⁷ World Bank (2019)

³⁸ Kabeyi and Olanweraju (2022)

³⁹ World Bank (2017)