



International Association for Impact Assessment – Ireland-UK Branch



Royal Town Planning Institute – North West Region



Department of Civic Design – University of Liverpool



PRE-ANNOUNCEMENT

**First joint IAIA and RTPI theme based event
in Liverpool on 31st October 2006 - 10.00-17.00**

Emerging SEA Directive based Sustainability Appraisal (SA) practice in UK spatial planning

Venue:

The Foresight Centre, University of Liverpool, 1 Brownlow Street, Liverpool
(10 Min walk from Liverpool Lime Street Station)

Joint IAIA and RTPI Morning Session: SA/SEA in the UK – first experiences

Speakers will include: Riki Therivel, Chris Bamber (GONW, tbc), Andrew Teage (BDP),
tbc (Taylor Young), Lisa Palframan (RSPB), Brian Clark (tbc), Liverpool MA students

JOINT LUNCH (included in fee)

Afternoon Sessions:

IAIA Delegates (Department of Civic Design):

- (1) Presentations from UK PhD students on SA/SEA
- (2) Discussion on further Branch activities

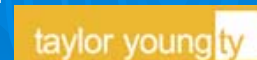
RTPI Delegates (Foresight Centre):

Workshops on how to do SA

Fee:

- £25 sponsored half day rate for IAIA Delegates (+£40 for those wishing to join RTPI Delegates in afternoon workshops) + VAT
- £85 for RTPI Delegates + VAT
- Limited number of subsidized places for students will be available!

IAIA Delegate Sponsors of the Event:



The event will be limited to around 60 Delegates from each, IAIA and RTPI (ie 120 in total)

For further information and registration for IAIA delegates, please send an email to either gazzola@liv.ac.uk or fischer@liv.ac.uk; RTPI delegates, please go to the RTPI NW homepage at <http://northwest.rtpi.org.uk/>