

**IAIA 2004**  
**International Association for Impact Assessment**

**Vancouver, 24–30 April 2004**

**HOW TO DESTROY AND MAKE BECOME POINTLESS  
THE EIA PROCEDURE AND THE ENVIRONMENTAL  
PROTECTION POLICIES: THE CASE STUDY OF A31  
HIGHWAY “VALDASTICO SUD”**

Authors:

Virginio Bettini (IUAV)  
Gianluigi Ceruti (Studio Legale Ceruti)  
Marco Stevanin (T.E.R.R.A. Ltd.Co.)  
Federica Marangoni (T.E.R.R.A. Ltd.Co.)  
Maria Luisa Perissinotto (T.E.R.R.A. Ltd.Co.))  
Davide Nucilla (T.E.R.R.A. Ltd.Co.)

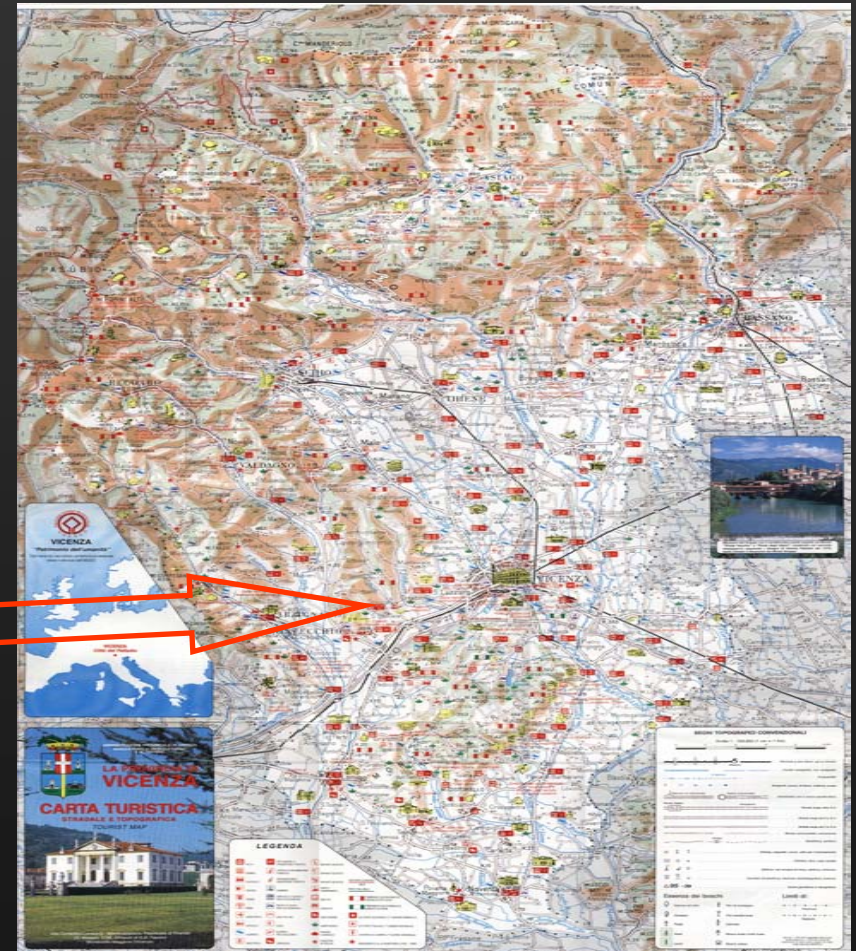
# Geographic position: Where is located the infrastructure project proposal?



# Historical Analysis

**Vicenza landscape** is characterized with a lot of historical and archaeological values:

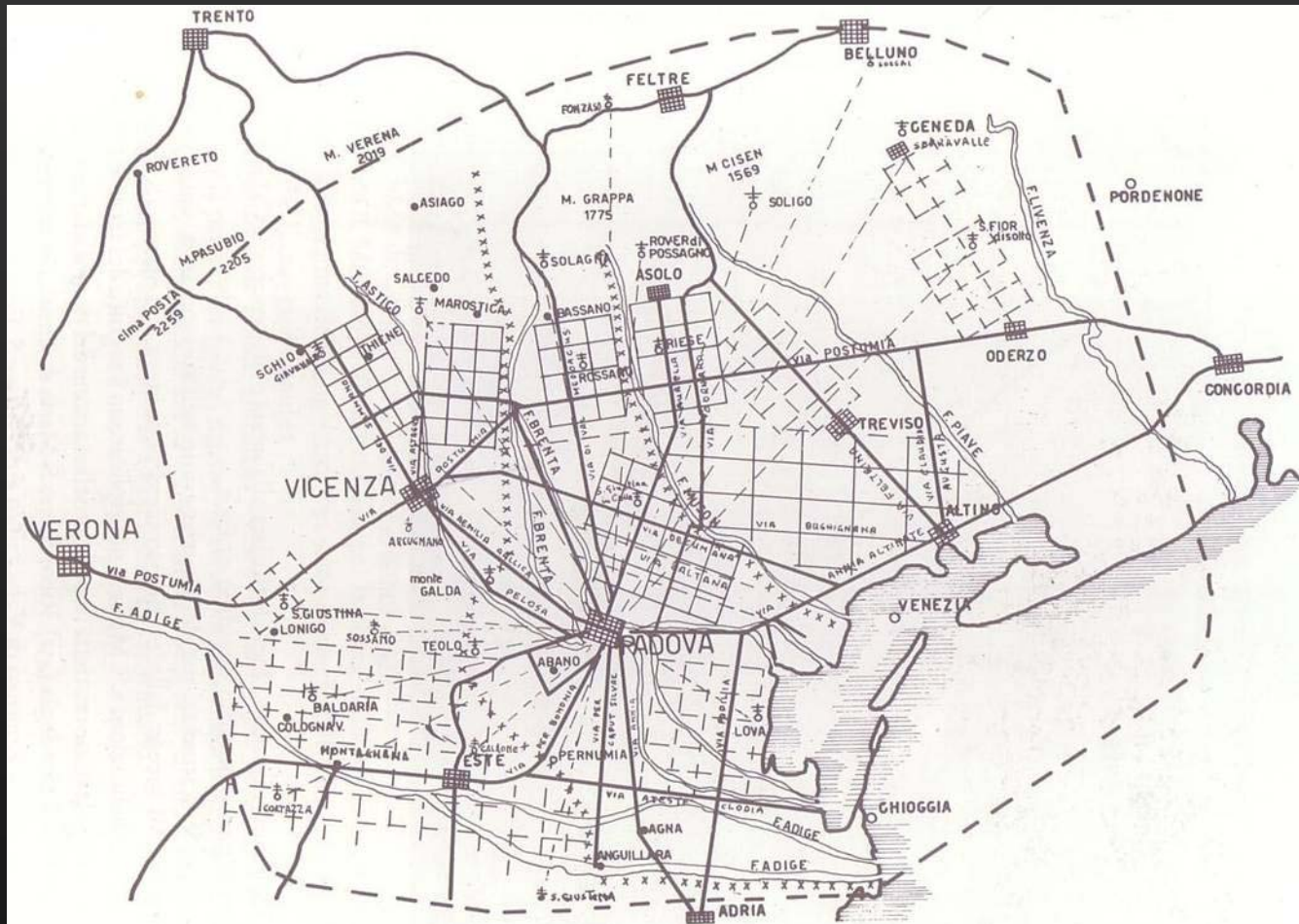
- **Archaeological sites**
- **Historical Itineraries**
- **Villas, palaces**





# Historical Analysis

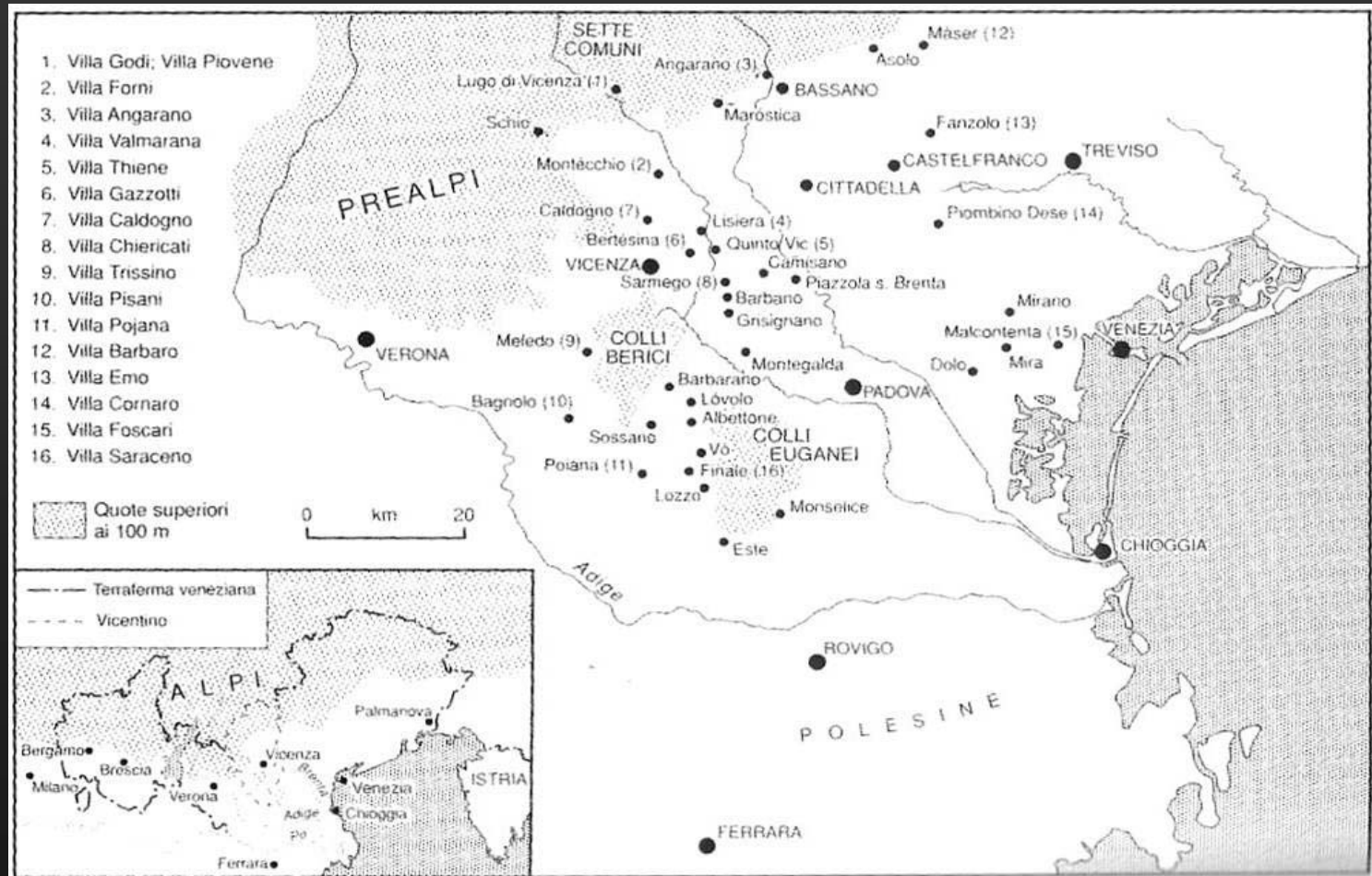
## Vicenza landscape: Historical Itineraries and Archaeological sites



Most of the Veneto territory and cities keep still signs of the roman planning scheme which are clearly identifiable

# Historical Analysis

## Vicenza landscape: Villas, palaces

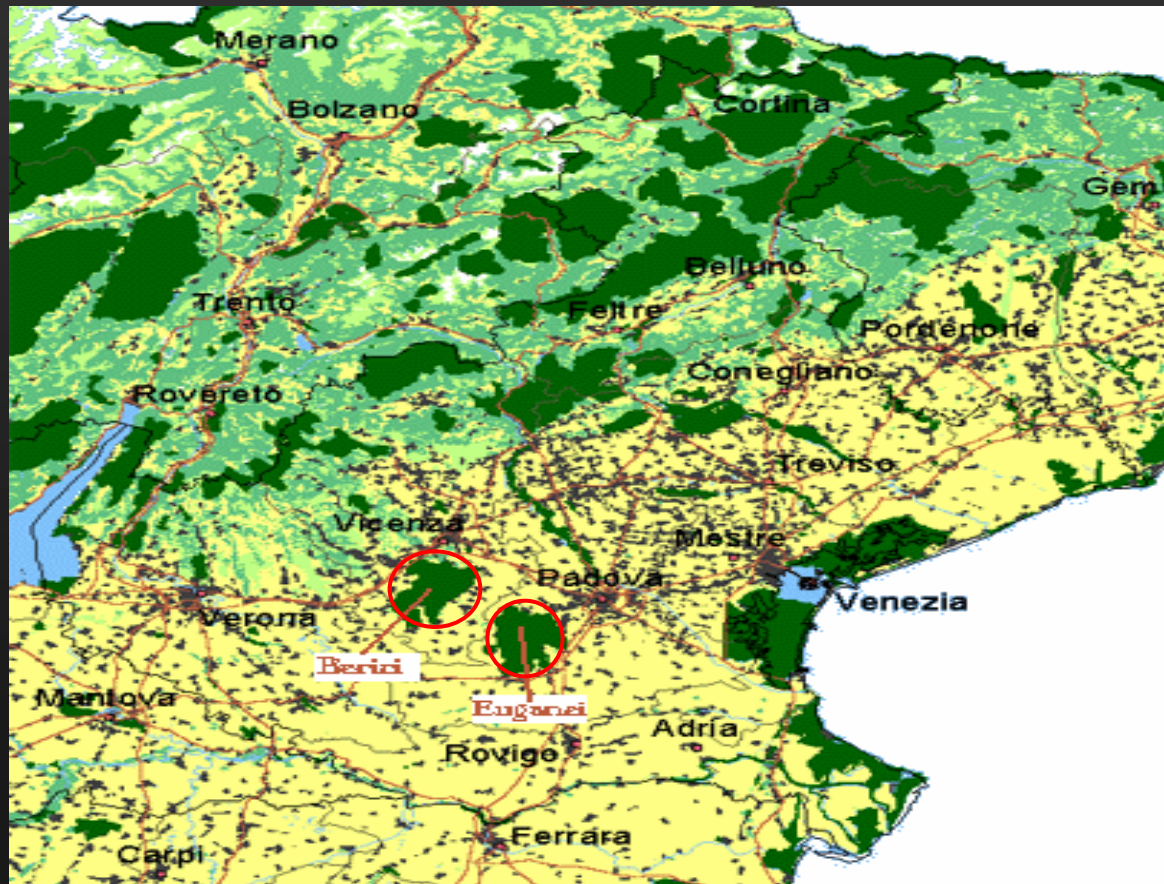


Veneto is also characterized with a lot of historical Villas and Palaces which were built by great Italian artists (such as Palladio)

# Environmental Analysis

**Berici and Euganei areas** are identified and classified by the European directives and Italian Laws as:

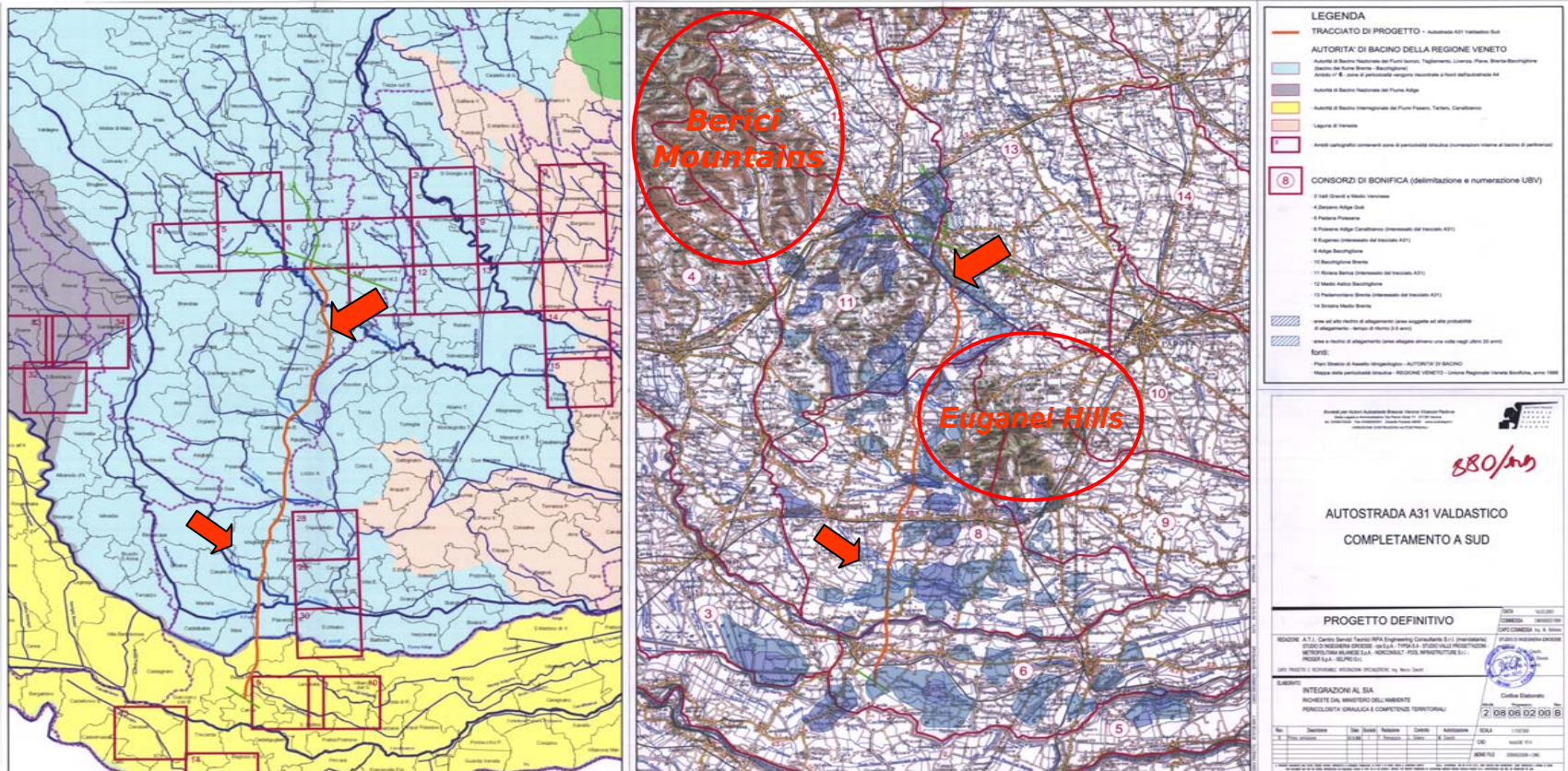
- Areas of Environmental Importance (Cultural and ecological landscape and habitat)
- Areas of flora and fauna Importance (significant animals and plants specie)





# Environmental Analysis and project proposal

There is also an environmental and hydro-geological risk between two important Critical and Sensitive sites such as *Monti Berici* (Berici Mountains) and *Colli Euganei* (Euganei Hills)



# Environmental Analysis and project proposal

**The *Cultural Landscape*** around the hinterland will be definitely destroyed as a result of the proposed highway





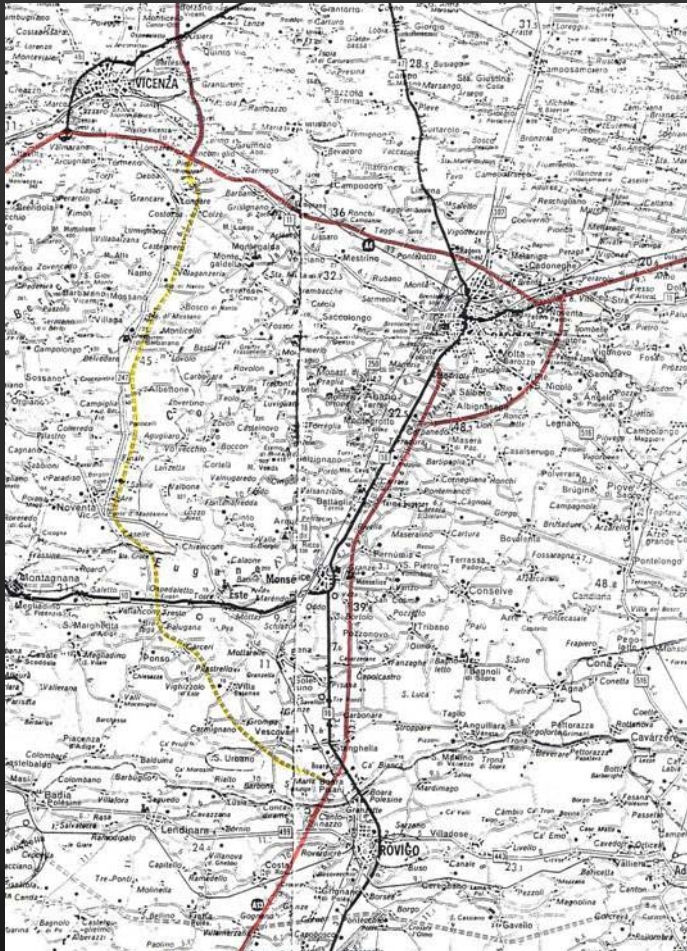
# Environmental Analysis and project proposal

**The *Cultural Landscape*** is shaped of different ecosystems where the historical, cultural and environmental merits are closely linked together with a vulnerable balance.

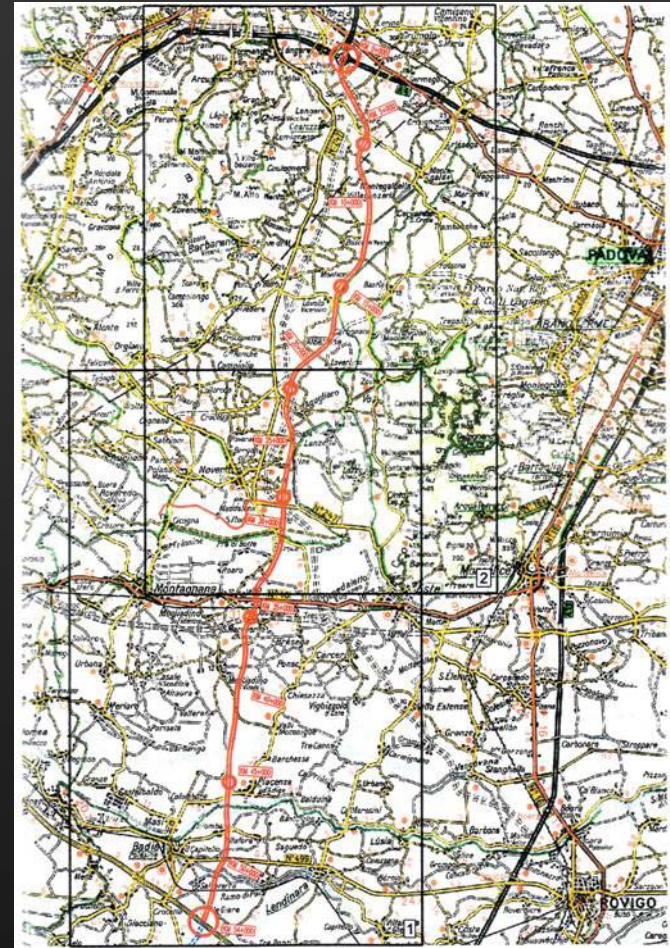




# The project proposal



Yesterday



Today

# The highway story

## The 70s and the 80s

**A31** project proposal **came out in the 70s**, when there was a great development of big public infrastructure

It was named as **“Pi. Ru. Bi.”** using the initial letter of the name of the politicians who wanted the project

Since the first step it **was criticized by the citizens and also the main** Architectural-Cultural-Environmental-Historical **Associations**, public and private **Institutions**, both national and international, such as: WWF, Italia Nostra, Our Europe, Save Europe Heritage, and The Landmark Trust.

National and Local Newspapers called “Pi.Ru.Bi. Highway” as:

- “The most useless highway of Italy”
- “Ecological monster”
- ...



# **The highway story**

## **The 90s**

In 1995 started the second phase of the Valdastico highway project:

The main reason why the Highway society wanted to prepare a new project was to develop the economy of southern Veneto.

They consider the development process as the wide diffusion of industries without thinking to the unequivocal consequence of this process that is the industrial sprawl in a sensitive area!

# The highway story

**2001 - 2003**

The **main steps** of the **project proposal story** was shortly:

**2001:** environmental compatibility request of the proponent; National EIA Commission meeting; Positive Answer of the Regional Commission with prescriptions and integrations; Meeting of the main Institutions which had competence in the project; Project proponent withdraw of the proposal (Autostrada BS-VR-VI-PD Society) and Negative Answer of both the Environmental Ministry and the Cultural Heritage Ministry.

# The highway story

**2001 - 2003**

**2002:** new project proposal but identical to previous project; New Answers: Positive of the Environmental Ministry and Negative of the Cultural Heritage Ministry.

**2003:** the Prime Minister Berlusconi Approval decree of the new project because of the contrast between the two Ministries and the Administrative Appeal of Environmental Protection Associations and Local committee, ...



# **Limits and weakness of the project proposal: base of the Amministrative Appeal**

**In the Environmental Impact Study there're a lot of  
methodological and procedural gaps and weakness,  
both in the project phase and in the Assessment  
Commission step.**

**Furthermore in the Assessment Commission job there  
have been heavy limits and dubious procedural  
mistakes.**

**None put (both in the past and in the present) attention  
to analyse important elements,  
such as:**

## **Administrative Appeal - Summary**

- **the whole length of the proposed highway**
- the right position of **quarries sites**;
- **the lack of an adequate evaluation of some important planning documents** (such as the Rural Development Plan or the Regional Development Plan)
- specific studies and analysis to right assess the ecosystems and bio-geographical features;
- the definitions of right and adequate **mitigations**
- the definitions of fair **compensations**
- **the respect of the Areas of Environmental Importance recognized by the European Community** (i.e.: Monti Berici and Colli Euganei)
- the landscape ecology analysis to plan connection ecological corridors
- the protection of the peaceful cultural landscape;
- depth atmosphere studies
- the **cumulative impact assessment**
- Efficient technical solutions
- **Real site alternative project proposal**
- **the urban and industrial sprawl effects of the new highway project**

# CONCLUSION

In these areas where the main economic resources get here from the agricultural sector and where humans and nature are closely linked together, this kind of infrastructure project represents a breaking element which would definitely destroy this sensitive tie.

An aspect of prime importance in this context is the definition of suitable reference elements such as spatial perimeters, scenarios and timing.

Developing different scenarios allows also the uncertainty of projections and models to be reduced, and therefore the reference hypotheses to be made more credible.

**In the EIA procedure of this project still lack the assessment of all this issues but also the some steps of the assessment procedure!**