

Environmental Assessment Information Portal

Impact Assessment for Industrial Development
- Whose Business Is It?

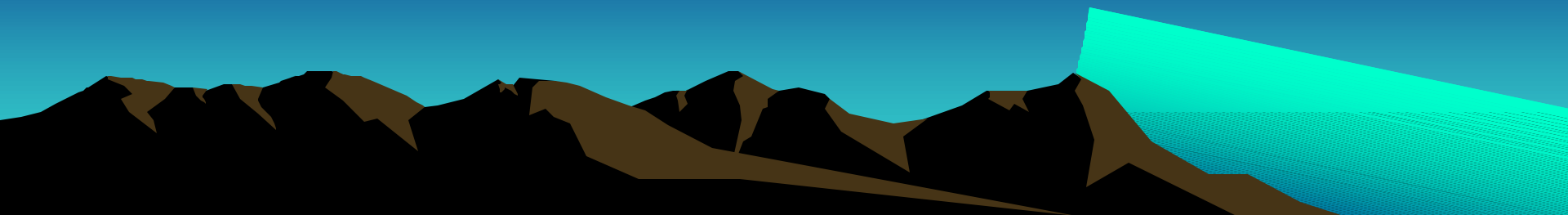
International Association for Impact Assessment
Vancouver 24-30 April, 2004

Danah Duke
Executive Coordinator
Miistakis Institute for the Rockies



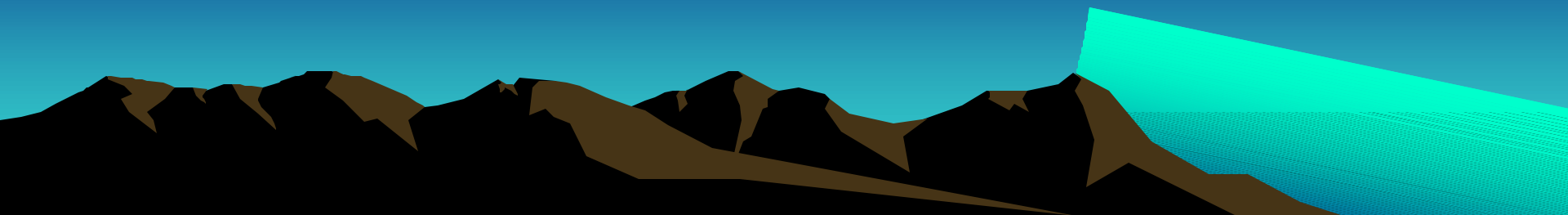
Sharing Good Practice Project - Background

- Meeting of 23 EA practitioners from across Canada (federal, provincial/territorial, Aboriginal, industry, consulting firms, ENGO's and universities, EA practitioners)
- Workshop was a major component of the Sharing Good Practice Project (supported by CEAA Program to Support Research and Development, Environment Canada's EA Branch and CISE Environment Secretariat)
- Project created and led by Lynch-Stewart & Associates

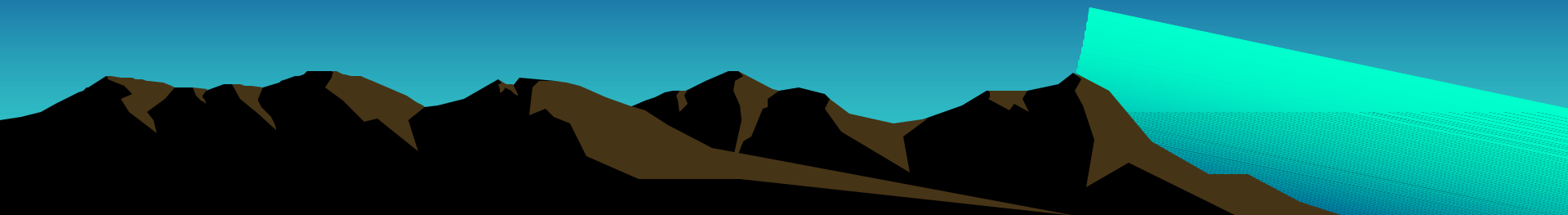


Outcomes of Workshop

- Workshop considered the successes and failures of the current information management process for EA in Canada, and the benefits of existing and emerging information systems.
- Developed a vision of an EA information management solution that would meet their priority needs
- Resulted in 4 key messages:

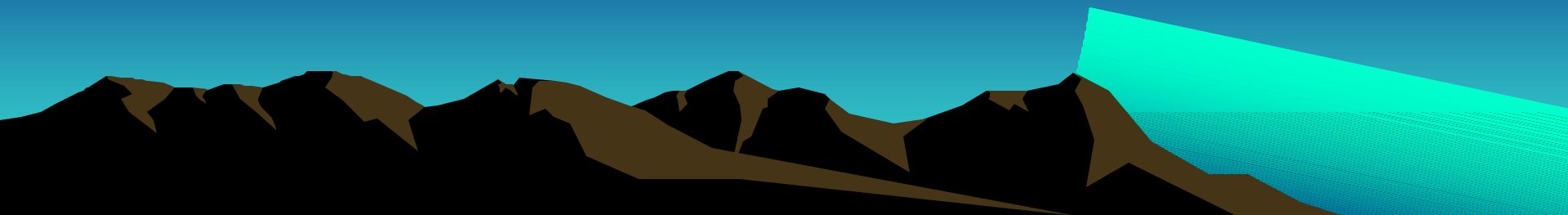


1. Although some successes in information management exist, EA practitioners often cannot tap into the best available expertise for project assessments
2. This results in costs to the environment, to the EA process and to the proponents and other stakeholders
3. Better management of EA information is needed to improve the practice and underlying science of EA
4. The consensus agreement on the best approach to improving information management for EA called for an Internet-based EA portal to link to existing information reports and public databases, and to connect with other information management initiatives.



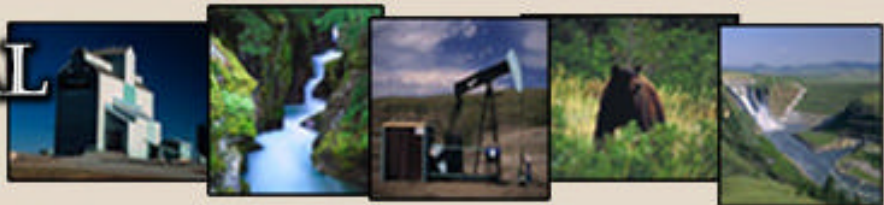
The Miistakis Prototype

- developed as a direct result of the Sharing Good Practice Workshop
- Integrates recommendations from the Workshop including:
 - Inclusion of geospatial data
 - Links to landuse and planning data (protected areas, species information, ownership)
 - Links to other EA information sources (past EA's, monitoring reports, guide to EA's etc)



ENVIRONMENTAL ASSESSMENT

IN SOUTHWESTERN ALBERTA



[home](#)

[mapping
tools](#)

[focal area](#)

[literature
database](#)

[EA info](#)

[partners](#)

A Tool for Environmental Assessment Practitioners

The Canadian Environmental Assessment Act, and equivalent provincial legislation, require that environmental assessments be conducted when a range of development activities are proposed.

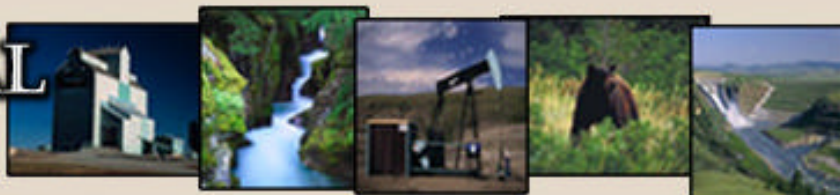
Whether they be screenings, comprehensive studies, panel reviews or cumulative effects analyses, these assessments require a range of environmental information to be analyzed in a short time. Delays in acquiring information mean costly project delays and/or disregard for appropriate environmental components given assessment deadlines.



Industry, including forestry and the oil and gas sector, agencies and private consultants require biological and geographical information when conducting an environmental assessment (EA). This information is often scattered, difficult to find, resulting in an inefficient process with duplication of efforts.

ENVIRONMENTAL ASSESSMENT

IN SOUTHWESTERN ALBERTA



[home](#)

[mapping
tools](#)

[focal area](#)

[literature
database](#)

[EA info](#)

[partners](#)

Focal Area

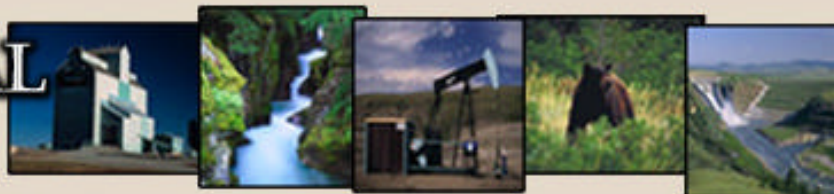
The south-west corner of Alberta is located in the Crown of the Continent, an international ecosystem spanning the shared Rocky Mountain region of British Columbia, Alberta and Montana.

The region constitutes one of the most biologically diverse areas remaining in North America. A full complement of large carnivores and ungulates can be found in this region including grizzly bears, black bears, bobcats, lynx, cougars, coyotes, wolves, wolverine, elk, mountain goats, moose, mule deer, white-tailed deer, and Rocky Mountain bighorn sheep. Many smaller mammals, birds, reptiles and amphibians of ecological importance are found in this area including wandering garter snake, plains garter snake, northern Leopard frog and long toed salamander. A diverse array of aquatic species can be found including bull trout and cutthroat trout.



ENVIRONMENTAL ASSESSMENT

IN SOUTHWESTERN ALBERTA



[home](#)

[mapping
tools](#)

[focal area](#)

[literature
database](#)

[EA info](#)

[partners](#)

Literature Database

The literature database contains grey literature, related to Environmental Impact Assessments (EIA's).

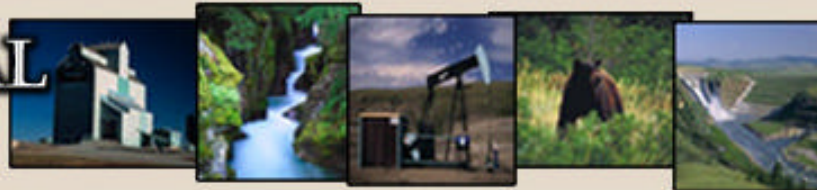
Documents included in the database come from resource libraries in the industry sector as well as public sources. Grey literature is often more difficult to find as it can be located in small libraries, or in private consulting company libraries throughout the province.

The database acts as a tool, which allows the user to search and view literature of interest. Reference material found in the database includes past EIA's, policy documents, wildlife studies, monitoring reports, regulations and other related material. Literature in the database can be accessed through a number of ways. Searching by Author, Title, Category and Keyword will provide material related to the search topic. In addition to exploring the database via the word search, a spatial component has been included. The user can define the area of study through the onscreen map of Alberta which will then display all the literature linked to that specific area. As a result of the search methods provided, the user should be able to effectively explore the



ENVIRONMENTAL ASSESSMENT

IN SOUTHWESTERN ALBERTA



[home](#)

[mapping
tools](#)

[focal area](#)

[literature
database](#)

[EA info](#)

[partners](#)

Links to Environmental Assessment sites

For a summary of environmental assessment regulations from the provincial and federal government, click [here](#).

1. [Alberta Environment](#)

This web site provides information on work carried out under the authority of the Environmental Protection and Enhancement Act and the Water Act. In addition to monitoring, inspection and enforcement procedures for Alberta's resources.

2. [Canadian Environmental](#)

This web site has an abundance of good information available for use. In particular, there is a section where a topic of interest can be searched along with the applicable legislation, related articles and information and many additional links to other helpful websites.

3. [Canadian Council of Ministers of the Environment](#)

This web site provides information about new publications, Canadian Environmental Quality Guidelines, as well as current initiatives the council is undertaking.



ENVIRONMENTAL ASSESSMENT

IN SOUTHWESTERN ALBERTA



home

***mapping
tools***

focal area

*literature
database*

EA info

partners

Mapping Tools

This site provides an interactive prototype mapping interface which maps specimen occurrence data from Species Analyst servers across North America in real time and compares them to GIS map layers. In addition, the mapping tool is linked to a literature database that consists of grey literature documents related to environmental assessments. Users are able to define an area of interest, view associated spatial layers and related literature documents. Users are able to search the literature database by title, author, keyword and type of document.

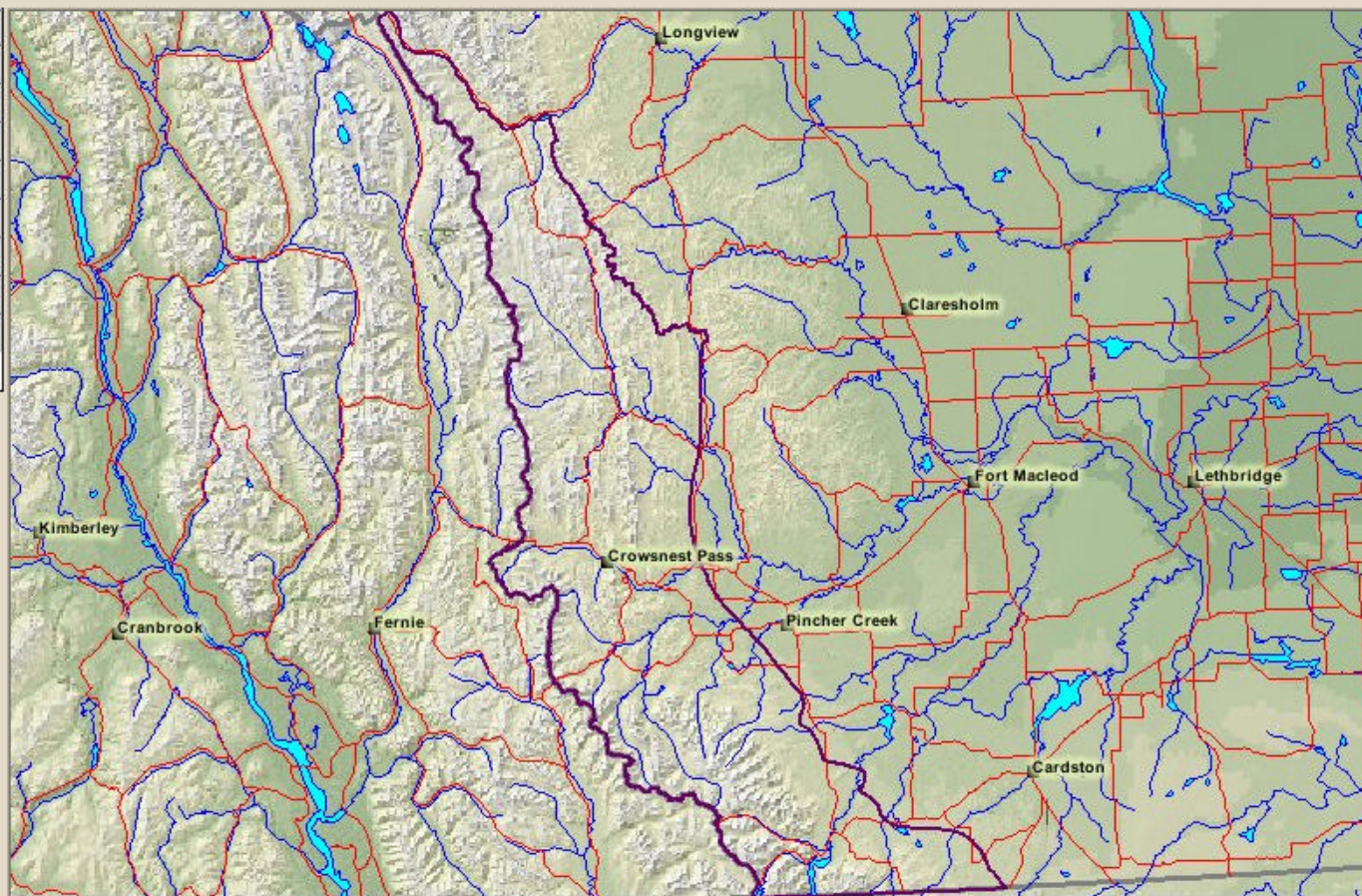


[Go To Maps](#)

Experts Database

Our [Experts Database](#) compiles contact information from experts in the region on a variety of topics. Recognizing that one of our greatest data sources comes from individuals, this

ENVIRONMENTAL ASSESSMENT IN SOUTHWESTERN ALBERTA



Layers

Visible Active

- ☒ ☒ Focus Area
- ☒ ☐ Cities
- ☒ ☐ Roads
- ☒ ☐ Hydrology - Water Bodies
- ☒ ☐ Hydrology
- ☐ ☐ Wells
- ☐ ☐ Cultural Features
- ☐ ☐ Dwelling Numbers Per Qtr 1990-2002
- ☐ ☐ Environmentally Significant Areas
- ☐ ☐ Agrasid Soils
- ☐ ☐ Alberta Vegetation Inventory
- ☐ ☐ Dispositions
- ☐ ☐ Mineral Leases
- ☐ ☐ Provincial Jurisdictions
- ☐ ☐ Ownership
- ☐ ☐ IRP Zones
- ☐ ☐ Protected Areas
- ☐ ☐ Counties
- ☒ ☐ Provincial Boundary
- ☐ ☐ Landsat TM 7 Sample
- ☒ ☐ Background Image

Zoom In

[Click here to begin](#)

Inbox - Mic...

3 Internet ...

Microsoft Po...

Microsoft Word

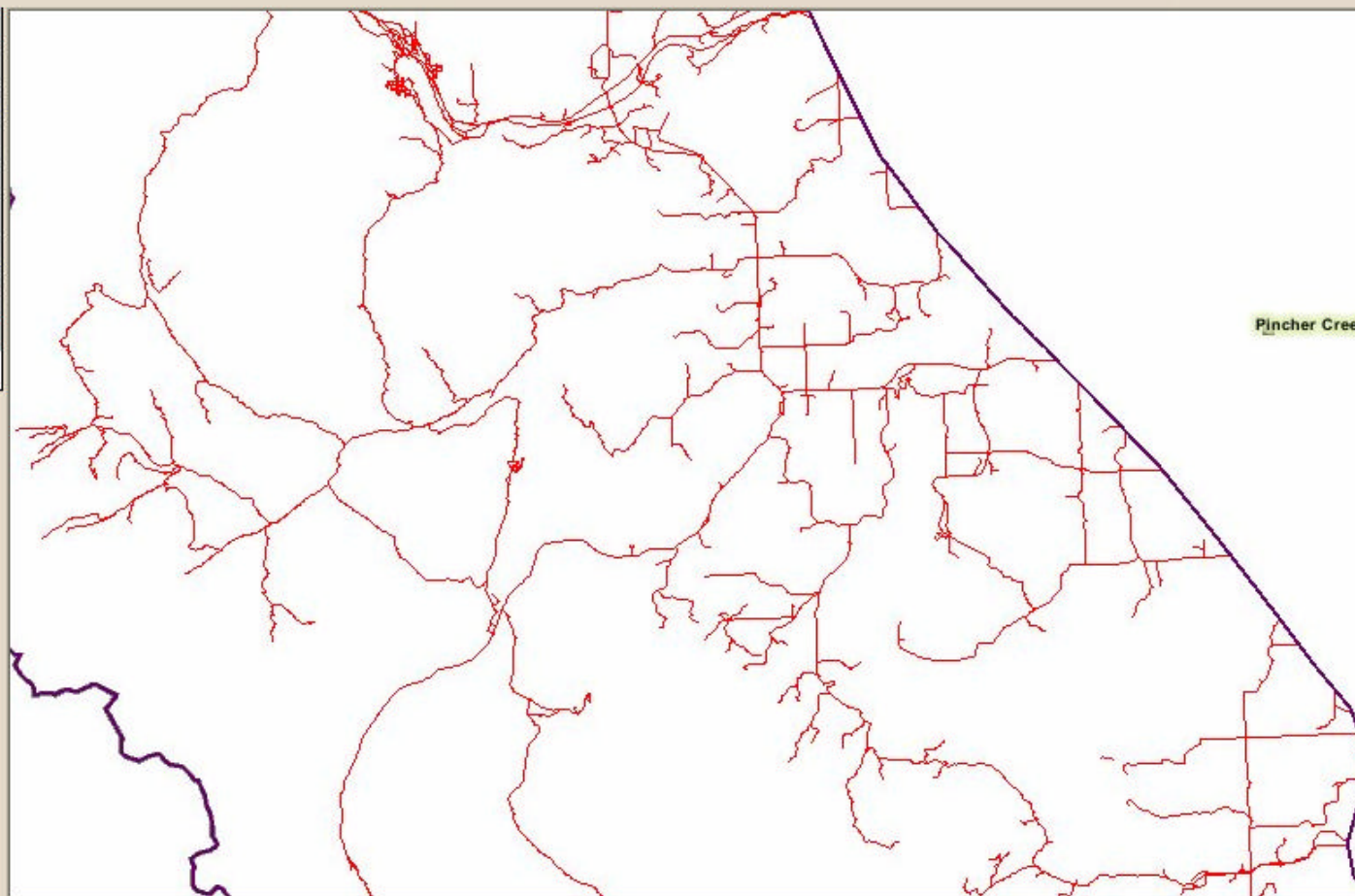
Calculator

SharingGood...

Adobe Acrob...

2:00 PM

ENVIRONMENTAL ASSESSMENT IN SOUTHWESTERN ALBERTA



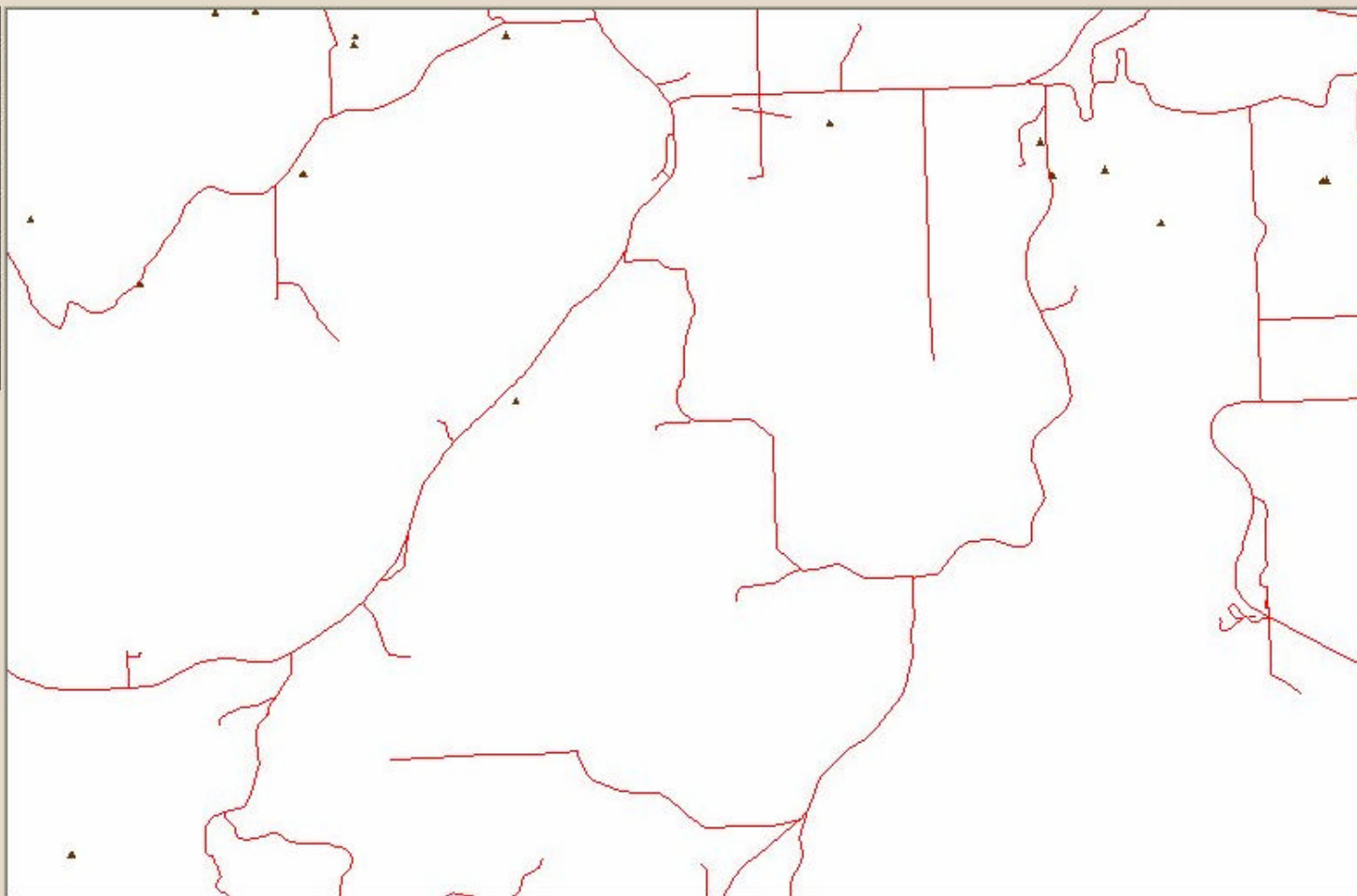
Layers

Visible Active

- ☒ ☒ Focus Area
- ☒ ☐ Cities
- ☒ ☐ Transportation
- ☐ ☐ Detailed Hydrology - Water Bodies
- ☐ ☐ Detailed Hydrology
- ☐ ☐ Cutlines
- ☐ ☐ Wells
- ☐ ☐ Cultural Features
- ☐ ☐ Dwelling Numbers Per Qtr 1990-2002
- ☐ ☐ Environmentally Significant Areas
- ☐ ☐ Agrasid Soils
- ☐ ☐ Alberta Vegetation Inventory
- ☐ ☐ Dispositions
- ☐ ☐ Mineral Leases
- ☐ ☐ Provincial Jurisdictions
- ☐ ☐ Ownership
- ☐ ☐ IRP Zones
- ☐ ☐ Protected Areas
- ☐ ☐ Counties
- ☒ ☐ Provincial Boundary
- ☐ ☐ Landsat TM 7 Sample

Zoom In

ENVIRONMENTAL ASSESSMENT IN SOUTHWESTERN ALBERTA



Layers

Visible Active

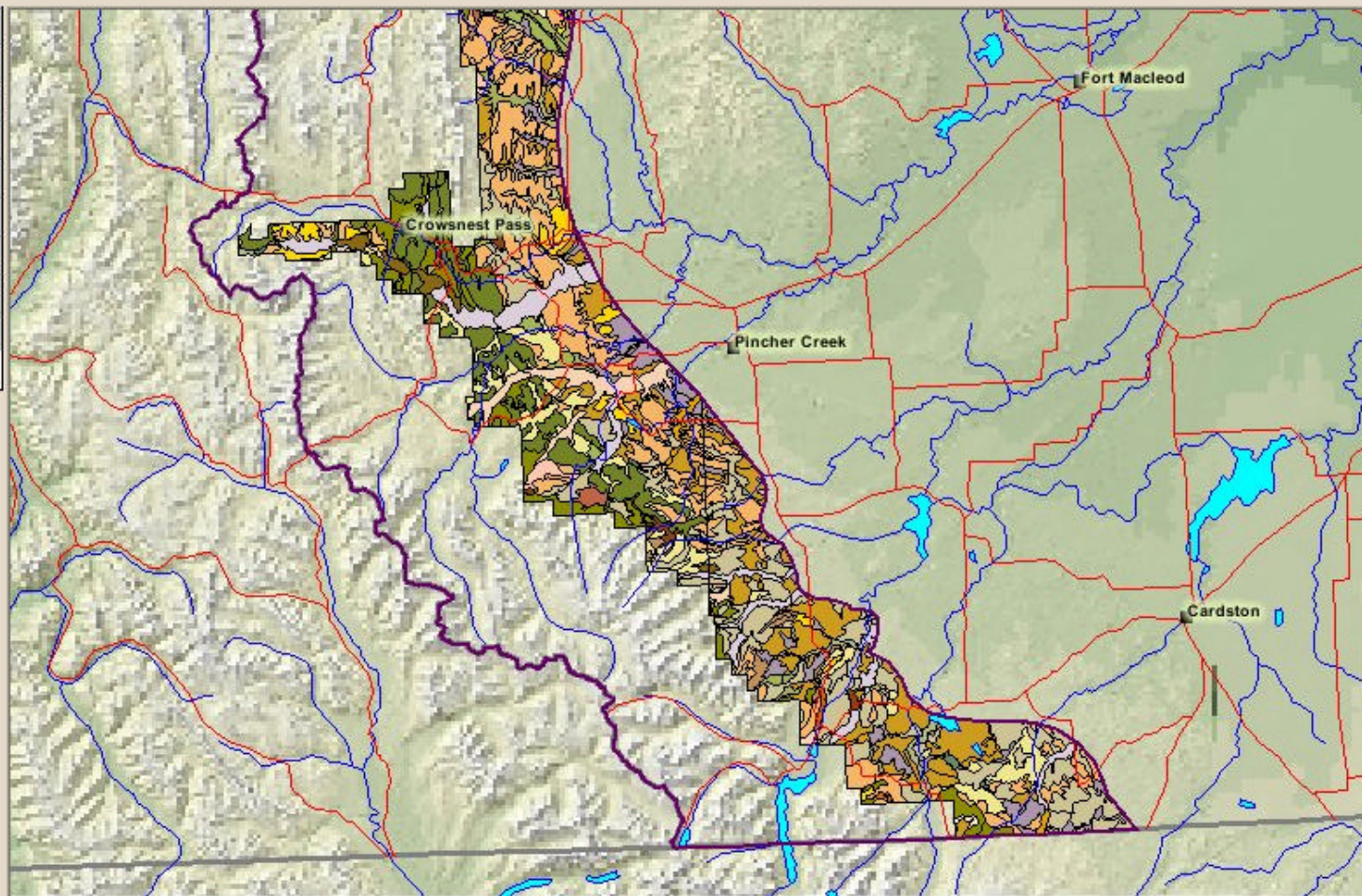
- ☒ ☐ Focus Area
- ☒ ☐ Cities
- ☒ ☐ Transportation
- ☐ ☐ Detailed Hydrology - Water Bodies
- ☐ ☐ Detailed Hydrology
- ☐ ☐ Cutlines
- ☒ ☒ Wells
- ☐ ☐ Cultural Features
- ☐ ☐ Dwelling Numbers Per Qtr 1990-2002
- ☐ ☐ Environmentally Significant Areas
- ☐ ☐ Agrasid Soils
- ☐ ☐ Alberta Vegetation Inventory
- ☐ ☐ Dispositions
- ☐ ☐ Mineral Leases
- ☐ ☐ Provincial Jurisdictions
- ☐ ☐ Ownership
- ☐ ☐ IRP Zones
- ☐ ☐ Protected Areas
- ☐ ☐ Counties
- ☒ ☐ Provincial Boundary
- ☐ ☐ Landsat TM 7 Sample

Wells

Rec	UWI	WELL_NAME	LATITUDE	LONGITUDE	TD	ELEV_KB	SUBSEA	RRDATE	LIC_DATE	OPERATOR
1	00/06-16-006-02W5/0	"TEXACO CASTLE RIVER 6-16-6-2"	49.4722	-114.21479	4103.8	1370.7	-2733.1	"02/28/1959"	"05/30/1958"	"IMPERIAL OIL RESOURCES LIMITI

Identify

ENVIRONMENTAL ASSESSMENT IN SOUTHWESTERN ALBERTA



Layers

- Visible Active
- ☒ ☐ Focus Area
 - ☒ ☐ Cities
 - ☒ ☐ Roads
 - ☒ ☐ Hydrology - Water Bodies
 - ☒ ☐ Hydrology
 - ☐ ☐ Wells
 - ☐ ☐ Cultural Features
 - ☐ ☐ Dwelling Numbers Per Qtr 1990-2002
 - ☐ ☐ Environmentally Significant Areas
 - ☒ ☒ Agrasid Soils
 - ☐ ☐ Alberta Vegetation Inventory
 - ☐ ☐ Dispositions
 - ☐ ☐ Mineral Leases
 - ☐ ☐ Provincial Jurisdictions
 - ☐ ☐ Ownership
 - ☐ ☐ IRP Zones
 - ☐ ☐ Protected Areas
 - ☐ ☐ Counties
 - ☒ ☐ Provincial Boundary
 - ☐ ☐ Landsat TM 7 Sample
 - ☒ ☐ Background Image

Agrasid Soils

Rec	POLYNUMB	SCA	LMOD	LMODEL	SALT	MUNAME	ECODIST	ECO_REG	ECO_DIST	NSLC2000	LSYS_NO	LS_COMP	LS_SYM	LSLGDSYM	LEG_DE
1	27830	8	r	H1l	F	DVG5/H1l	17.2a	17	2a	482315	09	e	17.2a.09e	17.2a.09	1-T5R1W
2	27781	8		R2h	F	BVA5/R2h	17.2a	17	2a	482315	09	e	17.2a.09e	17.2a.09	1-T5R1W

Identify



Soil Landscapes User's Manual

February 2001.

This AGRASID Version 3.0 Soil Landscape User's Manual was compiled by:

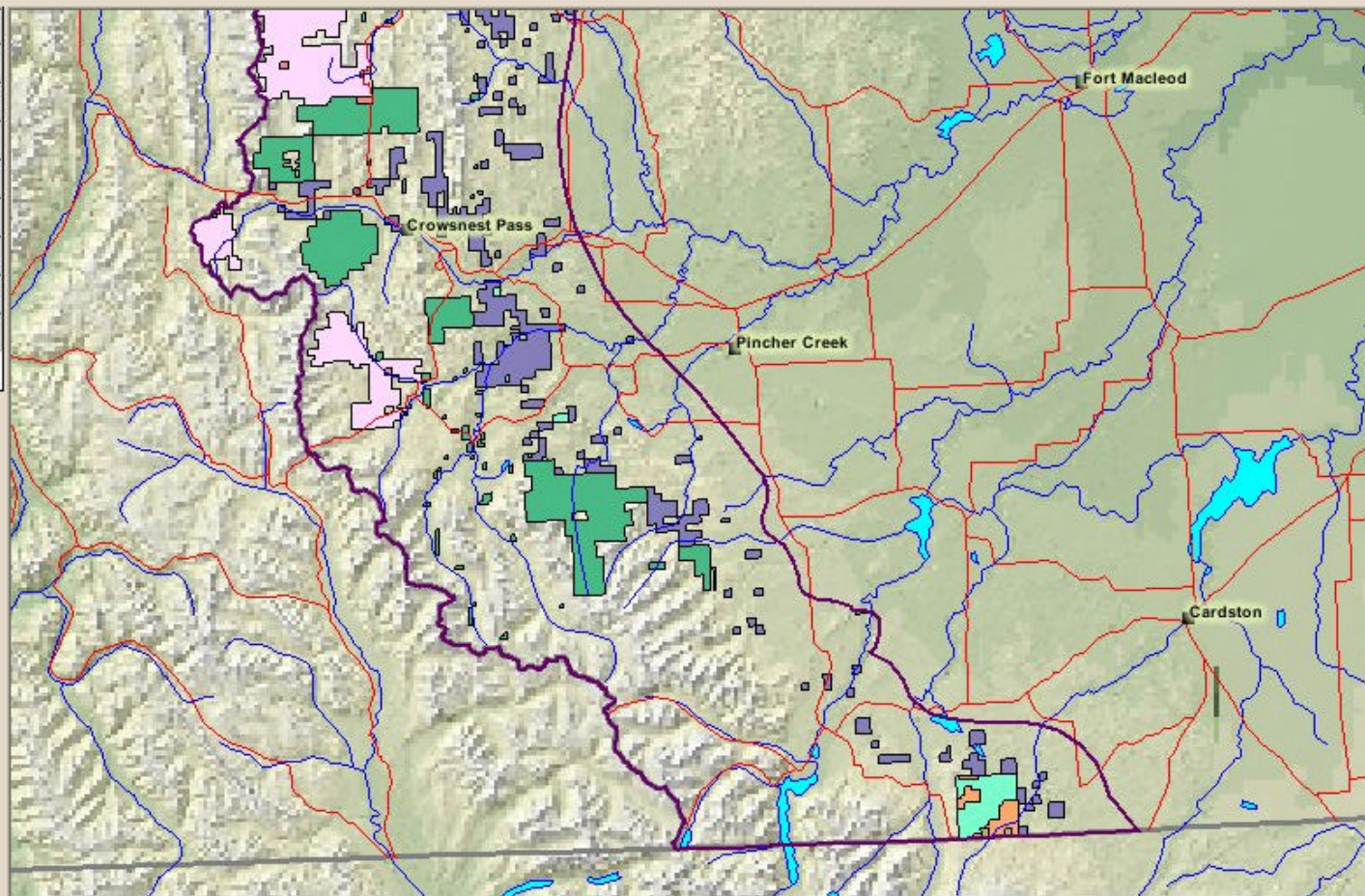
J.A. Brierley, Western Land Resource Group, Agriculture and Agri-Food Canada
T. C. Martin, Conservation and Development Branch, Alberta Agriculture, Food and Rural Development
D. J. Spiess, Conservation and Development Branch, Alberta Agriculture, Food and Rural Development

This version of the Soil Landscapes User's Manual is based on the original manual (June 1998) written by:

W. L. Nikiforuk, SLRI Consultants Limited
G. G. Tychon, Spatial Data Systems Consulting
J. A. Brierley, Agriculture and Agri-Food Canada
P. E. Smith, Agriculture and Agri-Food Canada

TABLE OF CONTENTS

ENVIRONMENTAL ASSESSMENT IN SOUTHWESTERN ALBERTA



- Legend**
- Focus Area
 - Cities
 - Roads
 - Hydrology - Water Bodies
 - Hydrology
 - Dispositions
 - Grazing Disposition
 - Timber Disposition
 - Timber Reservation
 - Grazing/Timber Disposition
 - Grazing/Timber Reservation
 - Timber Disp./Timber Res.
 - Grazing/Timber Disp./Timber Res.
 - Provincial Boundary
 - Background Image

Field

TYPE

Operator

=

Sample Values

"Grazing Disposition"

And

Or

Not

()

Add to Query String

TYPE = "Grazing Disposition"

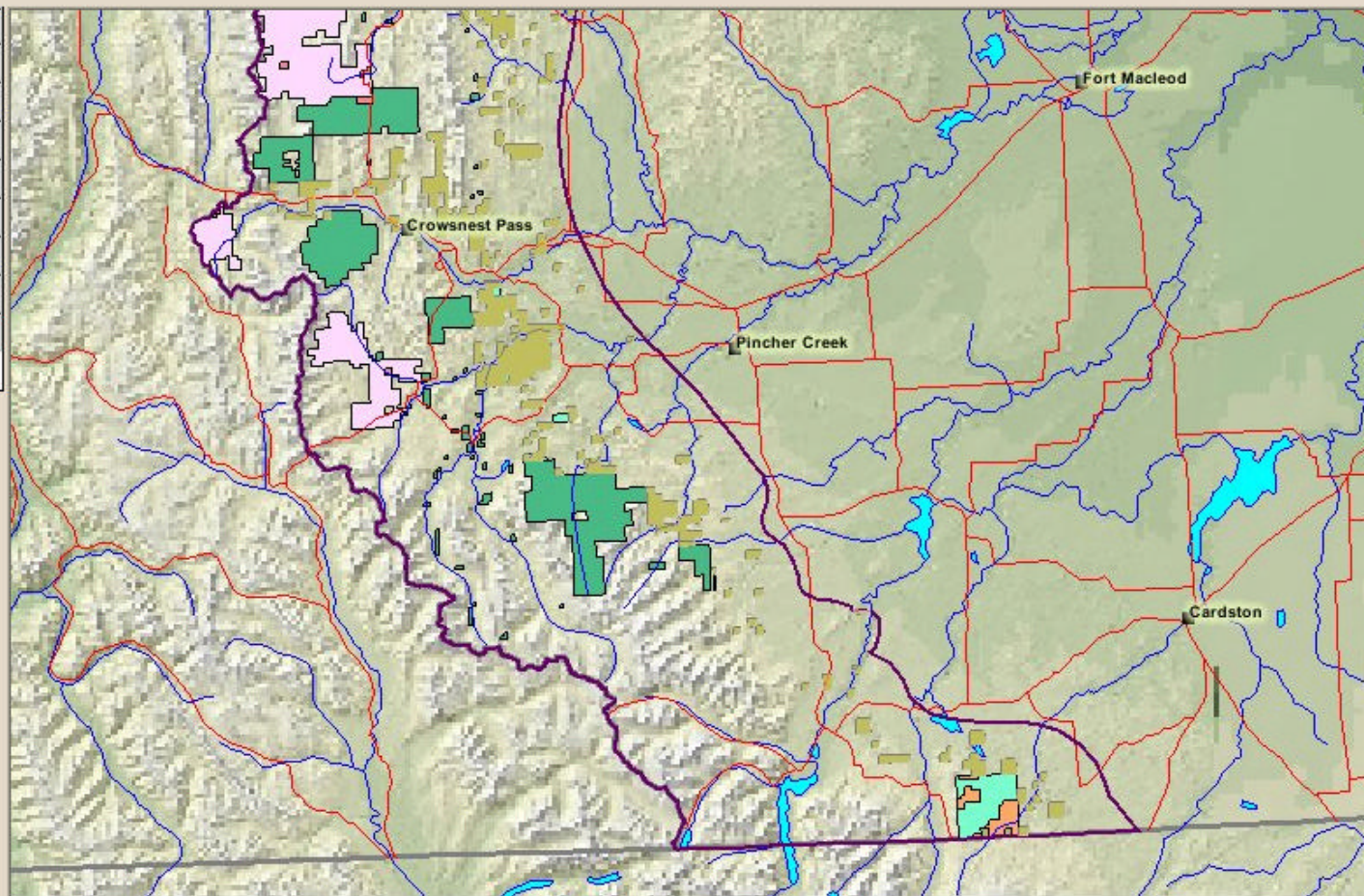
Execute

Undo

Clear

Query

ENVIRONMENTAL ASSESSMENT IN SOUTHWESTERN ALBERTA



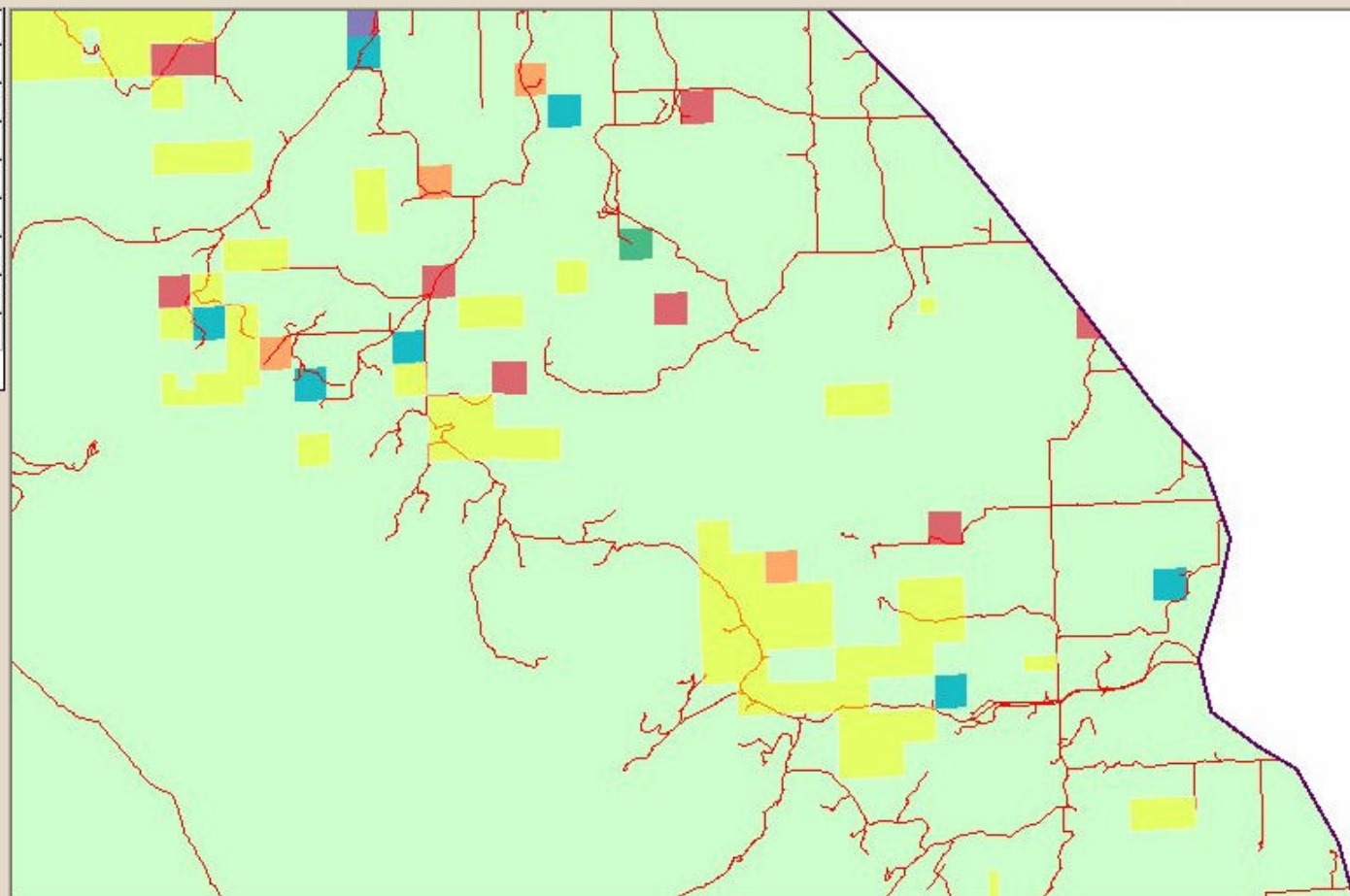
- Legend**
- Selected Features
 - Focus Area
 - Cities
 - Roads
 - Hydrology - Water Bodies
 - Hydrology
 - Dispositions
 - Grazing Disposition
 - Timber Disposition
 - Timber Reservation
 - Grazing/Timber Disposition
 - Grazing/Timber Reservation
 - Timber Disp./Timber Res.
 - Grazing/Timber Disp./Timber Res.
 - Provincial Boundary
 - Background Image

Dispositions

Rec	DISP	TYPE
1	1	Grazing Disposition
2	1	Grazing Disposition
3	1	Grazing Disposition
4	1	Grazing Disposition

Query

ENVIRONMENTAL ASSESSMENT IN SOUTHWESTERN ALBERTA



- Legend**
- Focus Area
 - Cities
 - Transportation
 - Dwelling Numbers Per Qtr 1990-2002**
 - 0 Dwellings
 - 1 Dwelling
 - 2 Dwellings
 - 3 Dwellings
 - 4 Dwellings
 - 5 Dwellings
 - 6 Dwellings
 - 7 Dwellings
 - 32 Dwellings
 - 69
 - Provincial Boundary

Dwelling Numbers Per Qtr 1990-2002

Rec	LDID	GENERAL	D00_09	D10_19	D20_29	D30_39	D40_49	D50_59	D60_69	D70_79	D80_89	D90_02	TOTAL
1	5020523NW		0	0	0	0	1	1	0	0	0	1	3

Identify

Species Analyst Server Query

Search by Species: (Scientific name only. Use the drop down to select a common species, or uses the find tool.) ?

Bucephala islandica

Barrow's Goldeneye

Find Scientific Name

Search by Geographic Area:

☒ Use to return only records within the scope of the project. In the future it will limit search to a user defined shape.

Search the Following Databases: ?

- ☒ Canadian Museum of Nature ([metadata](#))
- ☒ British Columbia Provincial Museum ([metadata](#))
- ☒ Alberta Provincial Museum ([metadata](#))
- ☒ Federation of Alberta Naturalist Alberta Bird Atlas Data ([metadata](#))
- ☒ University of Calgary Bird Database ([metadata](#))

**Narrow the Search to Specific Years:**From To **Narrow the Search to Specific Months:**From To

Get Records

Note before you click: Broad queries take much longer. For example querying all three databases without specifying a species will take ~5 mins and return 3000+ records

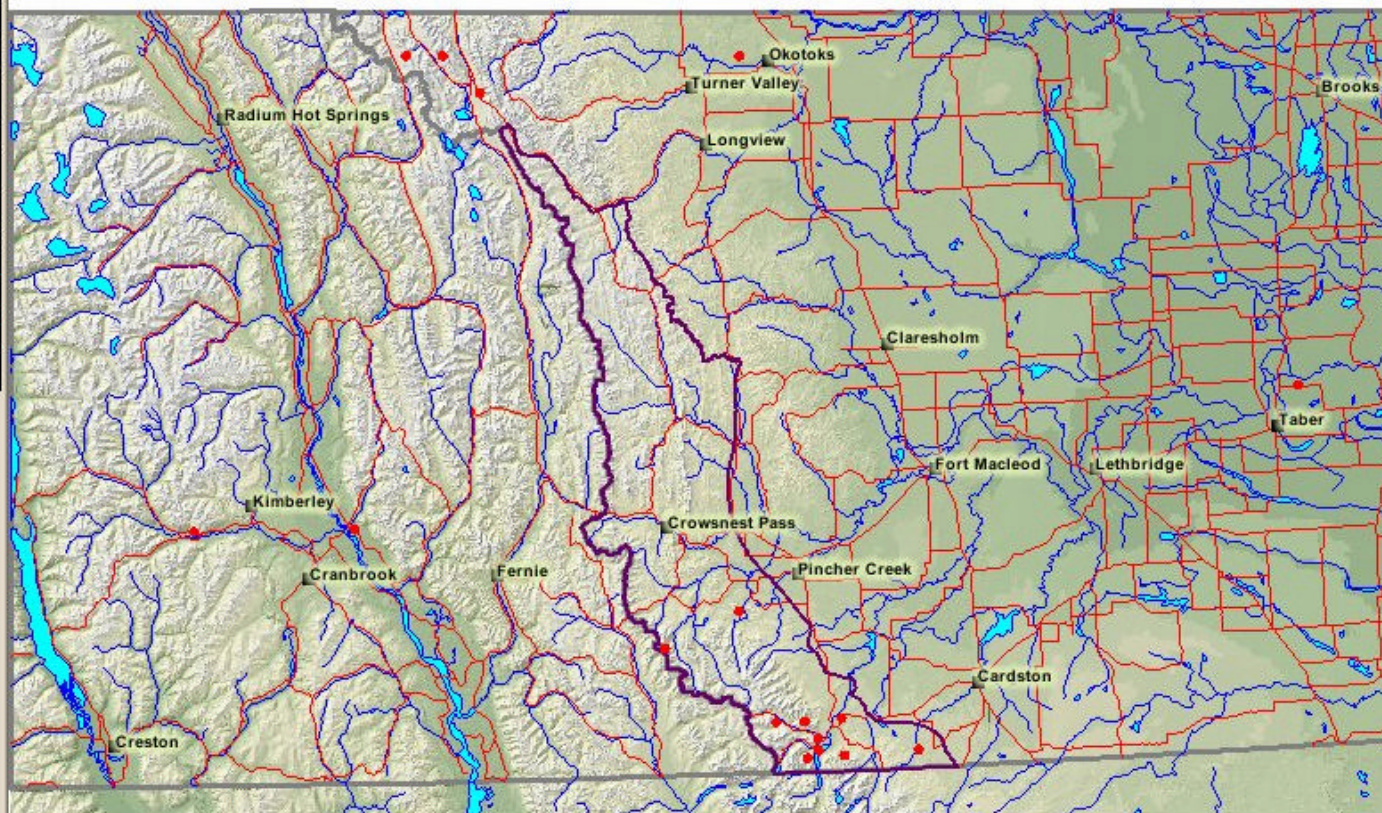
Select Rectangle

ASSESSMENT IN SOUTHWESTERN ALBERTA**Layers**

Visible Active

- ☒ ☐ Focus Area
- ☒ ☐ Cities
- ☒ ☐ Roads
- ☒ ☐ Hydrology - Water Bodies
- ☒ ☒ Hydrology
- ☐ ☐ Wells
- ☐ ☐ Cultural Features
- ☐ ☐ Dwelling Numbers Per Qtr 1990-2002
- ☐ ☐ Environmentally Significant Areas
- ☐ ☐ Agrasid Soils
- ☐ ☐ Alberta Vegetation Inventory
- ☐ ☐ Dispositions
- ☐ ☐ Mineral Leases
- ☐ ☐ Provincial Jurisdictions
- ☐ ☐ Ownership
- ☐ ☐ IRP Zones
- ☐ ☐ Protected Areas
- ☐ ☐ Counties
- ☒ ☐ Provincial Boundary
- ☐ ☐ Landsat TM 7 Sample
- ☒ ☐ Background Image

ENVIRONMENTAL ASSESSMENT IN SOUTHWESTERN ALBERTA



Layers

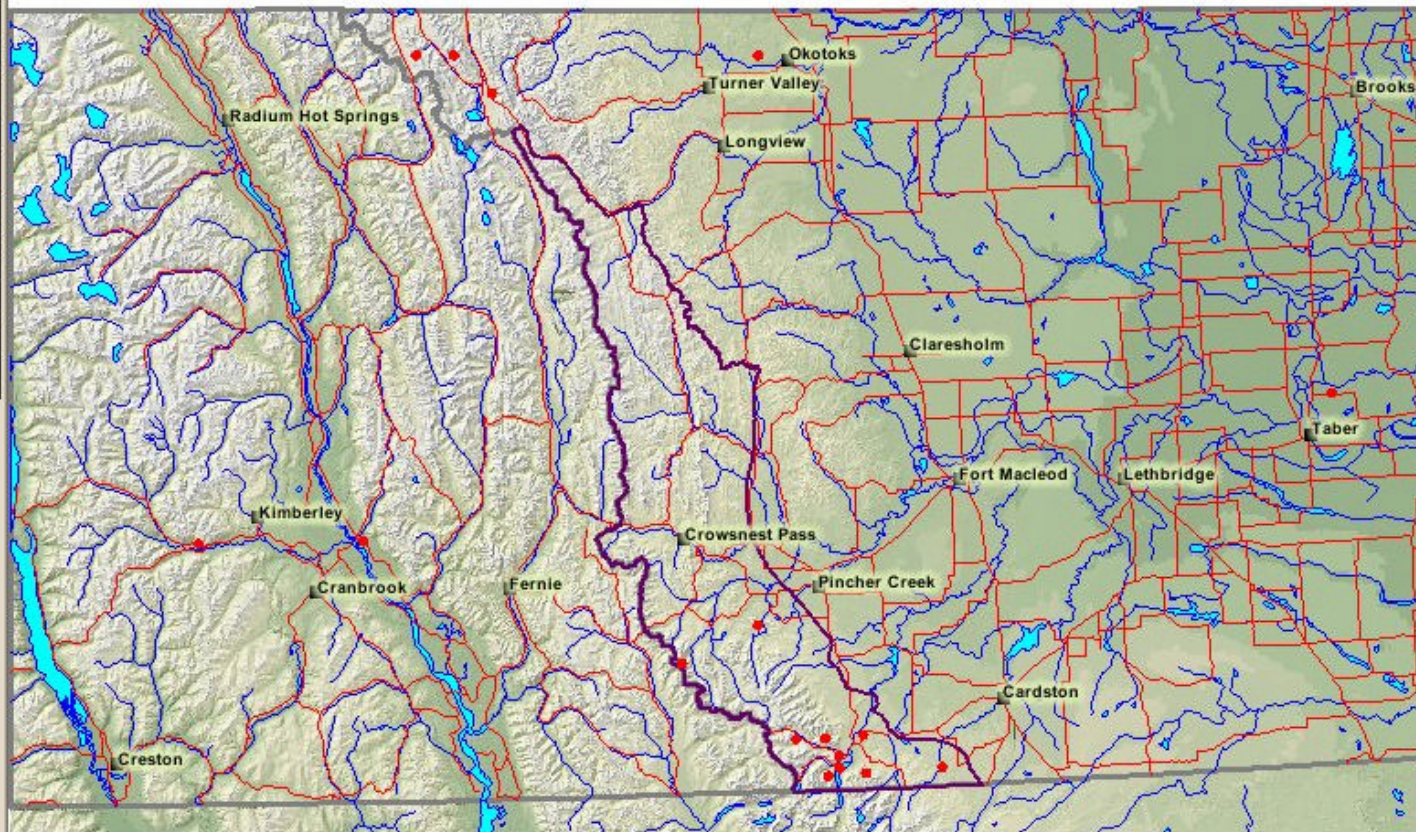
Visible Active

- ☒ ☐ Focus Area
- ☒ ☐ Cities
- ☒ ☐ Roads
- ☒ ☐ Hydrology - Water Bodies
- ☒ ☒ Hydrology
- ☐ ☐ Wells
- ☐ ☐ Cultural Features
- ☐ ☐ Dwelling Numbers Per Qtr 1990-2002
- ☐ ☐ Environmentally Significant Areas
- ☐ ☐ Agrasid Soils
- ☐ ☐ Alberta Vegetation Inventory
- ☐ ☐ Dispositions
- ☐ ☐ Mineral Leases
- ☐ ☐ Provincial Jurisdictions
- ☐ ☐ Ownership
- ☐ ☐ IRP Zones
- ☐ ☐ Protected Areas
- ☐ ☐ Counties
- ☒ ☐ Provincial Boundary
- ☐ ☐ Landsat TM 7 Sample
- ☒ ☐ Background Image

	LatinName	Date	Institution Code	Catalog Number	Collector	Locatio
1	Bucephala islandica „A	5-6-1990	FAN	13582608	1471	

Data Point Identify

ENVIRONMENTAL ASSESSMENT IN SOUTHWESTERN ALBERTA



Layers

Visible Active

- ☒ ☐ Focus Area
- ☒ ☐ Cities
- ☒ ☐ Roads
- ☒ ☐ Hydrology - Water Bodies
- ☒ ☒ Hydrology
- ☐ ☐ Wells
- ☐ ☐ Cultural Features
- ☐ ☐ Dwelling Numbers Per Qtr 1990-2002
- ☐ ☐ Environmentally Significant Areas
- ☐ ☐ Agrasid Soils
- ☐ ☐ Alberta Vegetation Inventory
- ☐ ☐ Dispositions
- ☐ ☐ Mineral Leases
- ☐ ☐ Provincial Jurisdictions
- ☐ ☐ Ownership
- ☐ ☐ IRP Zones
- ☐ ☐ Protected Areas
- ☐ ☐ Counties
- ☒ ☐ Provincial Boundary
- ☐ ☐ Landsat TM 7 Sample
- ☒ ☐ Background Image

Step One: To select the Geographic Extent of your Literature Search follow the steps below

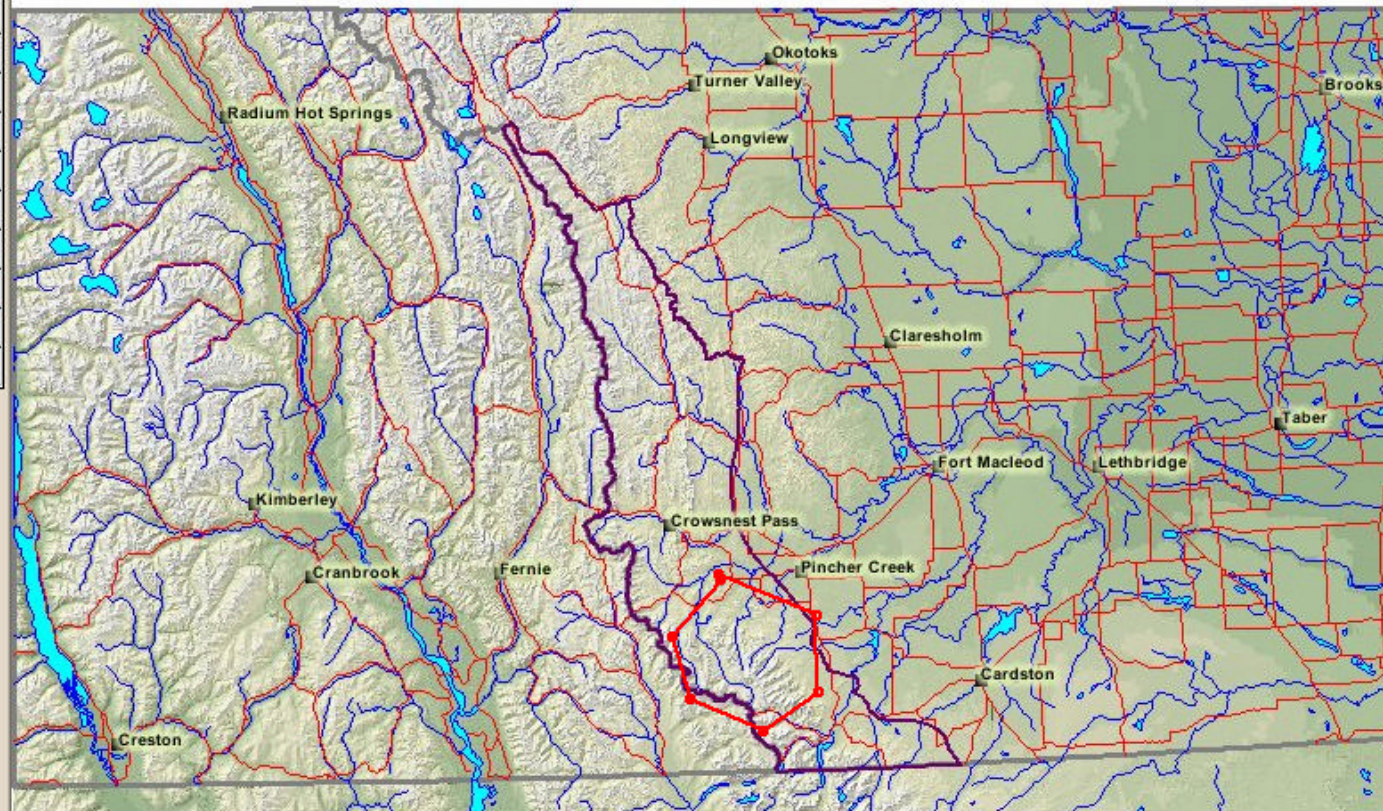
A. Using the crosshair pointer, draw an Area or Line that encompasses the location of interest

B. If necessary alter the Area or Line by using the following tools:

C. Then, click on the button that describes what you have drawn:

Literature Database Query

ENVIRONMENTAL ASSESSMENT IN SOUTHWESTERN ALBERTA



Visible Active

- ☒ ☐ Focus Area
- ☒ ☐ Cities
- ☒ ☐ Roads
- ☒ ☐ Hydrology - Water Bodies
- ☒ ☒ Hydrology
- ☐ ☐ Wells
- ☐ ☐ Cultural Features
- ☐ ☐ Dwelling Numbers Per Qtr 1990-2002
- ☐ ☐ Environmentally Significant Areas
- ☐ ☐ Agrasid Soils
- ☐ ☐ Alberta Vegetation Inventory
- ☐ ☐ Dispositions
- ☐ ☐ Mineral Leases
- ☐ ☐ Provincial Jurisdictions
- ☐ ☐ Ownership
- ☐ ☐ IRP Zones
- ☐ ☐ Protected Areas
- ☐ ☐ Counties
- ☒ ☐ Provincial Boundary
- ☐ ☐ Landsat TM 7 Sample
- ☒ ☐ Background Image

refresh map

Step One: To select the Geographic Extent of your Literature Search follow the steps below

A. Using the crosshair pointer, draw an Area or Line that encompasses the location of interest

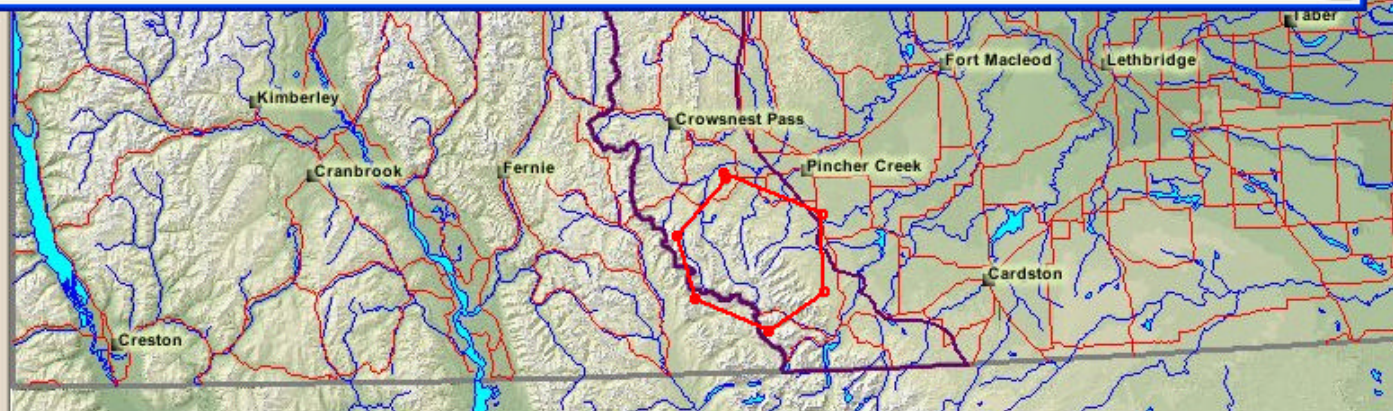
B. If necessary alter the Area or Line by using the following tools:

C. Then, click on the button that describes what you have drawn:

Literature Database Query

Step Two: Define any narrowing parameters of your literature search. Due to the small nature of the study area there is a large number of documents that cover the entire area, thus it is recommended the Study_Area field be used to narrow down your area of interest further.

Field	Operator	Value	
KEYWORDS	LIKE	wind energy	And Or Not ()
<input type="button" value="Add to Query"/>			
KEYWORDS LIKE "wind energy"			
<input type="button" value="Query Database"/> <input type="button" value="Undo"/> <input type="button" value="Clear"/> <input type="button" value="Close Window"/>			



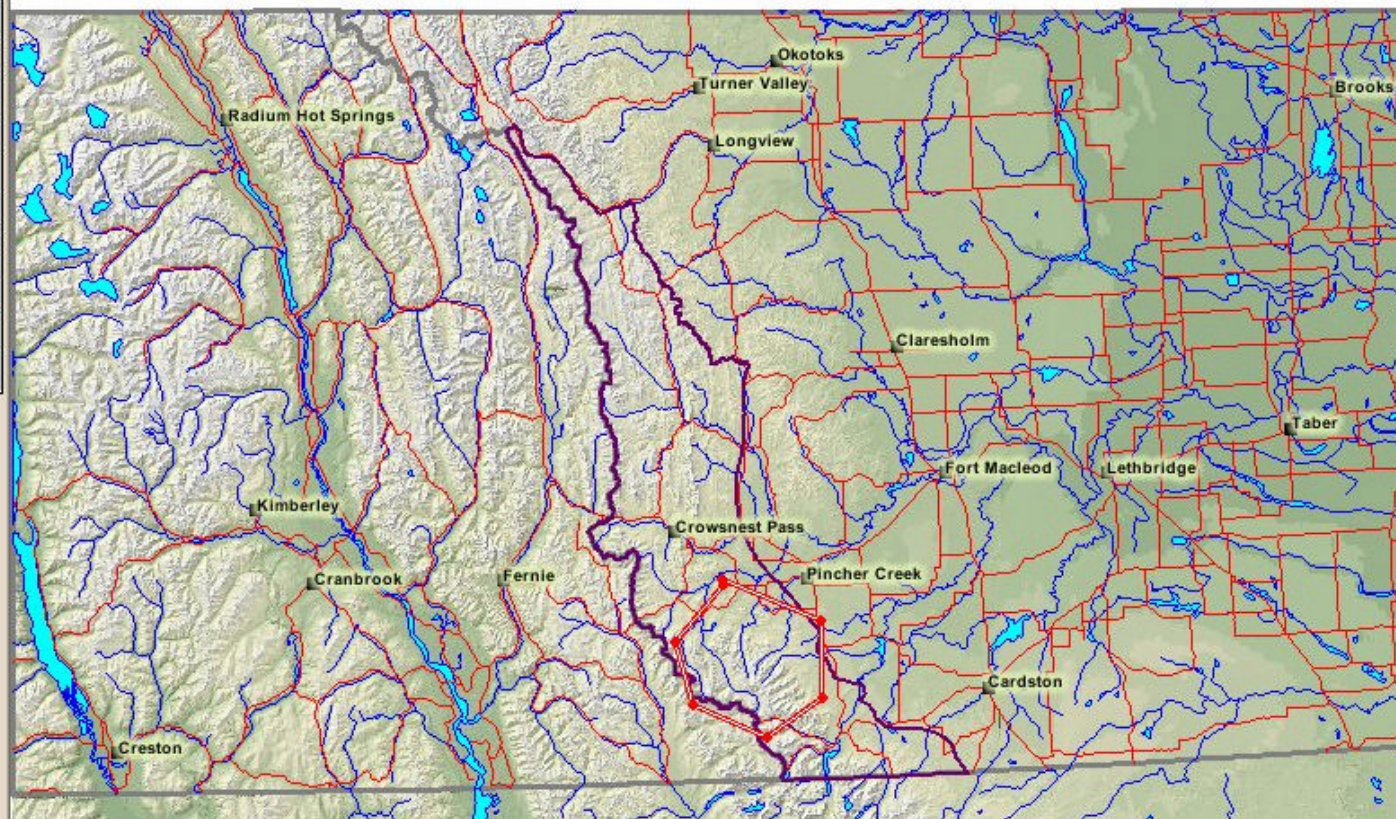
SOUTHWESTERN ALBERTA

Visible Active

- ☒ Focus Area
- ☒ Cities
- ☒ Roads
- ☒ Hydrology - Water Bodies
- ☒ Hydrology
- ☐ Wells
- ☐ Cultural Features
- ☐ Dwelling Numbers Per Qtr 1990-2002
- ☐ Environmentally Significant Areas
- ☐ Agrasid Soils
- ☐ Alberta Vegetation Inventory
- ☐ Dispositions
- ☐ Mineral Leases
- ☐ Provincial Jurisdictions
- ☐ Ownership
- ☐ IRP Zones
- ☐ Protected Areas
- ☐ Counties
- ☒ Provincial Boundary
- ☐ Landsat TM 7 Sample
- ☒ Background Image

Literature Database Query

ENVIRONMENTAL ASSESSMENT IN SOUTHWESTERN ALBERTA



Visible Active

- ☒ ☐ Focus Area
- ☒ ☐ Cities
- ☒ ☐ Roads
- ☒ ☐ Hydrology - Water Bodies
- ☒ ☒ Hydrology
- ☐ ☐ Wells
- ☐ ☐ Cultural Features
- ☐ ☐ Dwelling Numbers Per Qtr 1990-2002
- ☐ ☐ Environmentally Significant Areas
- ☐ ☐ Agrasid Soils
- ☐ ☐ Alberta Vegetation Inventory
- ☐ ☐ Dispositions
- ☐ ☐ Mineral Leases
- ☐ ☐ Provincial Jurisdictions
- ☐ ☐ Ownership
- ☐ ☐ IRP Zones
- ☐ ☐ Protected Areas
- ☐ ☐ Counties
- ☒ ☐ Provincial Boundary
- ☐ ☐ Landsat TM 7 Sample
- ☒ ☐ Background Image

refresh map

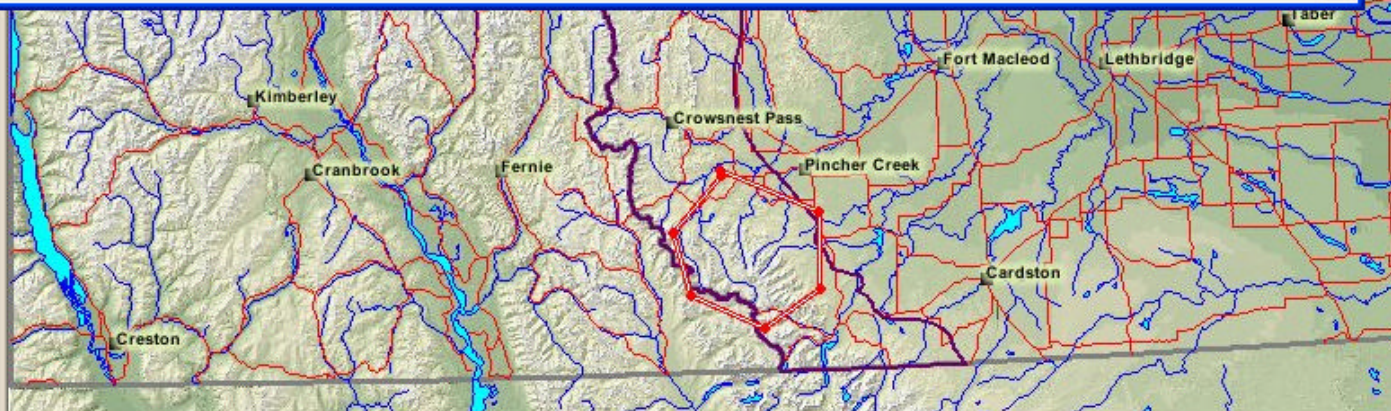
Literature Database

Rec	STUDY_AREA	AUTHOR	TITLE	EDITOR	RECID	MEDIUM	AUTHORSOUR	TITLESOURC
1	Whole Area	Paterson, B., Luft, B., and Jensen, E.	Evaluation of Small Scale Wind Turbines		667	Energy Report		

Literature Database Query

Step Two: Define any narrowing parameters of your literature search. Due to the small nature of the study area there is a large number of documents that cover the entire area, thus it is recommended the Study_Area field be used to narrow down your area of interest further.

Field	Operator	Value
MEDIUM	LIKE	Waste Management
<input type="button" value="And"/> <input type="button" value="Or"/> <input type="button" value="Not"/> <input type="button" value("(""=""/> <input type="button" value=")"/>		
<input type="button" value="Add to Query"/>		
MEDIUM LIKE "Waste Management"		
<input type="button" value="Query Database"/> <input type="button" value="Undo"/> <input type="button" value="Clear"/> <input type="button" value="Close Window"/>		



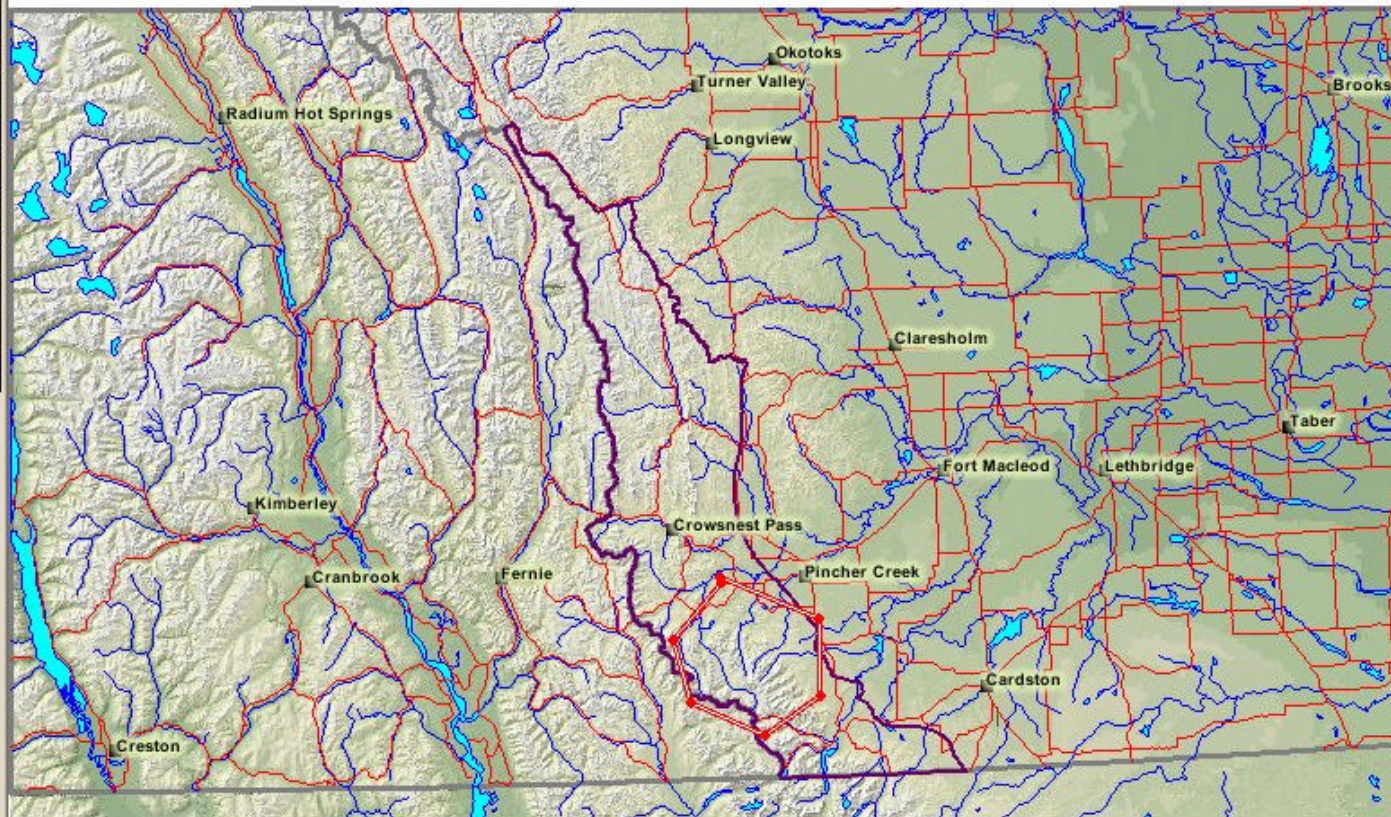
SOUTHWESTERN ALBERTA

Visible Active

- ☒ ☐ Focus Area
- ☒ ☐ Cities
- ☒ ☐ Roads
- ☒ ☐ Hydrology - Water Bodies
- ☒ ☒ Hydrology
- ☐ ☐ Wells
- ☐ ☐ Cultural Features
- ☐ ☐ Dwelling Numbers Per Qtr 1990-2002
- ☐ ☐ Environmentally Significant Areas
- ☐ ☐ Agrasid Soils
- ☐ ☐ Alberta Vegetation Inventory
- ☐ ☐ Dispositions
- ☐ ☐ Mineral Leases
- ☐ ☐ Provincial Jurisdictions
- ☐ ☐ Ownership
- ☐ ☐ IRP Zones
- ☐ ☐ Protected Areas
- ☐ ☐ Counties
- ☒ ☐ Provincial Boundary
- ☐ ☐ Landsat TM 7 Sample
- ☒ ☐ Background Image

Literature Database Query

ENVIRONMENTAL ASSESSMENT IN SOUTHWESTERN ALBERTA



Visible Active

- ☒ ☐ Focus Area
- ☒ ☐ Cities
- ☒ ☐ Roads
- ☒ ☐ Hydrology - Water Bodies
- ☒ ☒ Hydrology
- ☐ ☐ Wells
- ☐ ☐ Cultural Features
- ☐ ☐ Dwelling Numbers Per Qtr 1990-2002
- ☐ ☐ Environmentally Significant Areas
- ☐ ☐ Agrasid Soils
- ☐ ☐ Alberta Vegetation Inventory
- ☐ ☐ Dispositions
- ☐ ☐ Mineral Leases
- ☐ ☐ Provincial Jurisdictions
- ☐ ☐ Ownership
- ☐ ☐ IRP Zones
- ☐ ☐ Protected Areas
- ☐ ☐ Counties
- ☒ ☐ Provincial Boundary
- ☐ ☐ Landsat TM 7 Sample
- ☒ ☐ Background Image

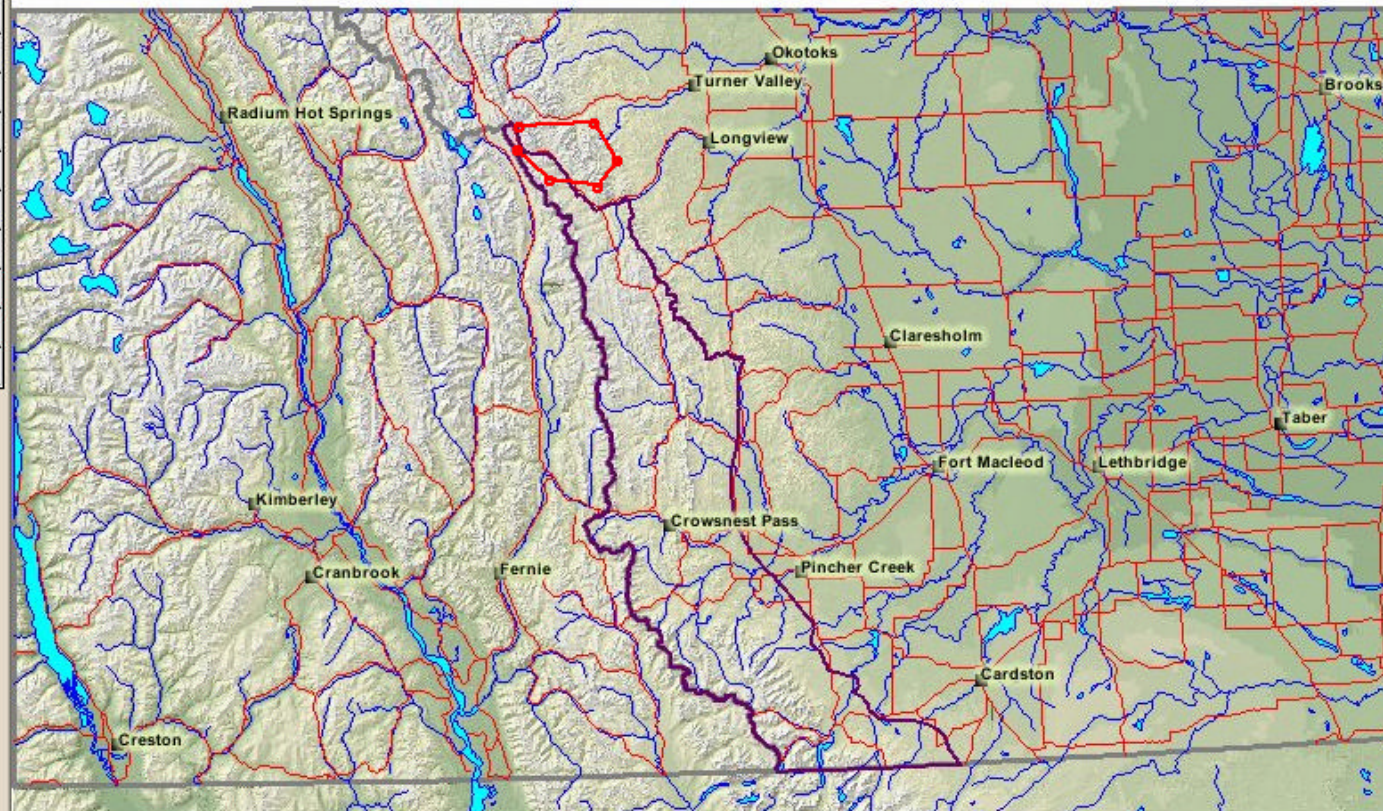
[refresh map](#)

Literature Database

Rec	STUDY_AREA	AUTHOR	TITLE	EC
1	Whole Area	Atkinson, J.M.	Hazardous Wastes in Alberta/ An Inventory and Review of Practices and Technology	Alberta E
2	Whole Area -		Recommended Oilfield Waste Management Requirements	

Literature Database Query

ENVIRONMENTAL ASSESSMENT IN SOUTHWESTERN ALBERTA



Visible Active

- ☒ Focus Area
- ☒ Cities
- ☒ Roads
- ☒ Hydrology - Water Bodies
- ☒ Hydrology
- ☐ Wells
- ☐ Cultural Features
- ☐ Dwelling Numbers Per Qtr 1990-2002
- ☐ Environmentally Significant Areas
- ☐ Agrasid Soils
- ☐ Alberta Vegetation Inventory
- ☐ Dispositions
- ☐ Mineral Leases
- ☐ Provincial Jurisdictions
- ☐ Ownership
- ☐ IRP Zones
- ☐ Protected Areas
- ☐ Counties
- ☒ Provincial Boundary
- ☐ Landsat TM 7 Sample
- ☒ Background Image

Please click on the map to define the geographic extent of the article(s) you wish to add to the grey literature database. When complete, press the "Complete Area" button.

Restart

Delete Last Point



Complete Area

refresh map

Select Line/Polygon

The following form allows for input into the "grey" literature database, related to Environmental Impact Assessments (EIA's) in south western Alberta. Feel free to enter information on literature that you think should be here. All entries will require approval before being displayed in the live database.

Author:	<input type="text"/>	Title:	<input type="text"/>
Editor:	<input type="text"/>	Medium:	<input type="text"/>
Author Source:	<input type="text"/>	Title Source:	<input type="text"/>
Edition:	<input type="text"/>	Publisher Location:	<input type="text"/>
Publisher:	<input type="text"/>	Publication Year:	<input type="text"/>
Publication Month:	<input type="text"/>	Volume:	<input type="text"/>
Report:	<input type="text"/>	Issue:	<input type="text"/>
Pages:	<input type="text"/>	Editor Series:	<input type="text"/>
Title Series:	<input type="text"/>	Volume Series:	<input type="text"/>
Storage Location:	<input type="text"/>	ISSN:	<input type="text"/>
ISBN:	<input type="text"/>	Comments:	<input type="text"/>
Abstract:	<input type="text"/>	Callnumber:	<input type="text"/>
Keywords:	<input type="text"/>	Scope:	<input type="text"/>
Category:	<input type="text"/>		

Next steps – National EA Portal

Development of a National Portal that consists of:

- 1) a national map interface that provides access to distributed repositories of data relevant to EA practitioners, and
- 2) a comprehensive EA toolkit that provides links to EA related materials

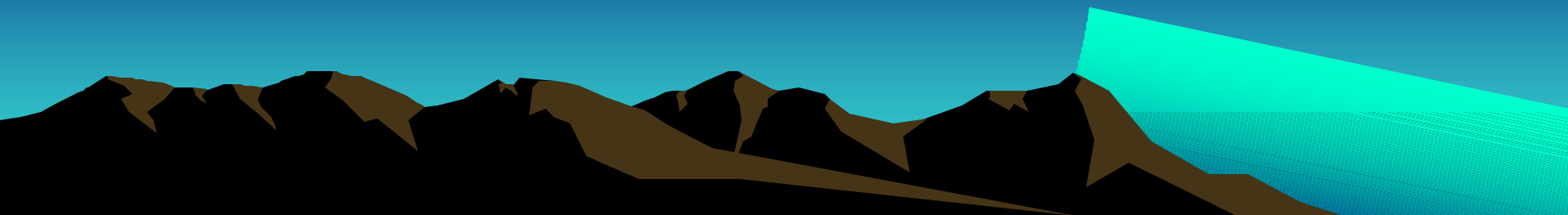
The map interface will provide access to **standards compliant distributed data** at both national and regional scales. The **toolkit**, in consultation with a national advisory board, will enable EA practitioners for the first time to discover and access – in a timely manner-the best available expertise in support of environmental assessment.



Summary

- This prototype *demonstrates* the integration of geospatial data, species data, landuse information and literature to facilitate the EA process, reducing redundancy of efforts and encouraging cooperation between environmental assessment practitioners, industry and agencies.

www.rockies.ca/eaportal



Partners

Environment Canada

Ducks Unlimited

Geoconnections

Shell Canada

University of Calgary

Yellowstone to Yukon Conservation Initiative

Manitoba Department of Conservation

Miistakis Institute for the Rockies

Canadian Information System for the Environment

Lynch Stewart & Associates

