

# Strategic Environmental Assessment in Korea

Kim Myungjin

[domyung@hanmail.net](mailto:domyung@hanmail.net)

National Institute of  
Environmental Research (NIER)

# **Major Topics**

**Why SEA?**

**EIA Structure**

**Rising Issues**

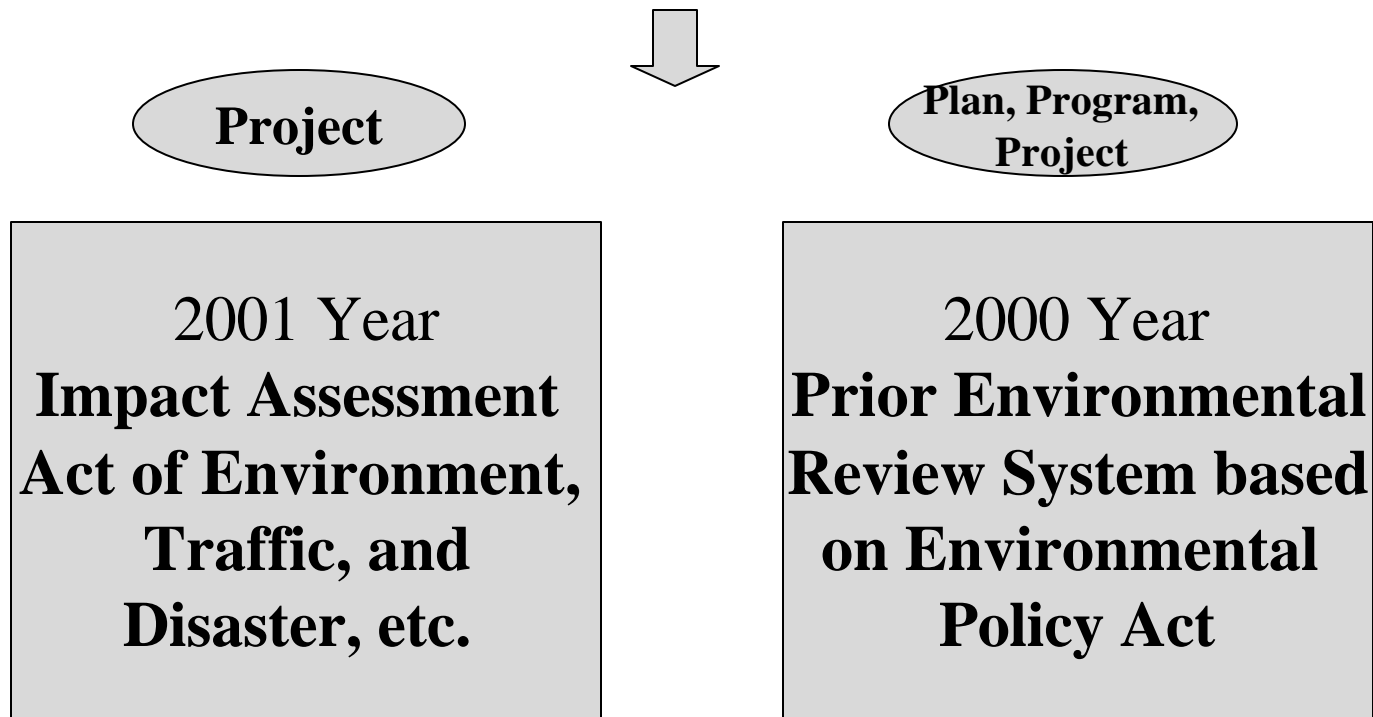
**Can SEA Solve It?**

**Past, Present and Future?**

# Why SEA?

- Effectiveness in Policy, Plan, Program
- Improvements to the EIA System
- Solve Project Issues in Debate
- International Standard
- Public Needs

# EIA Structure



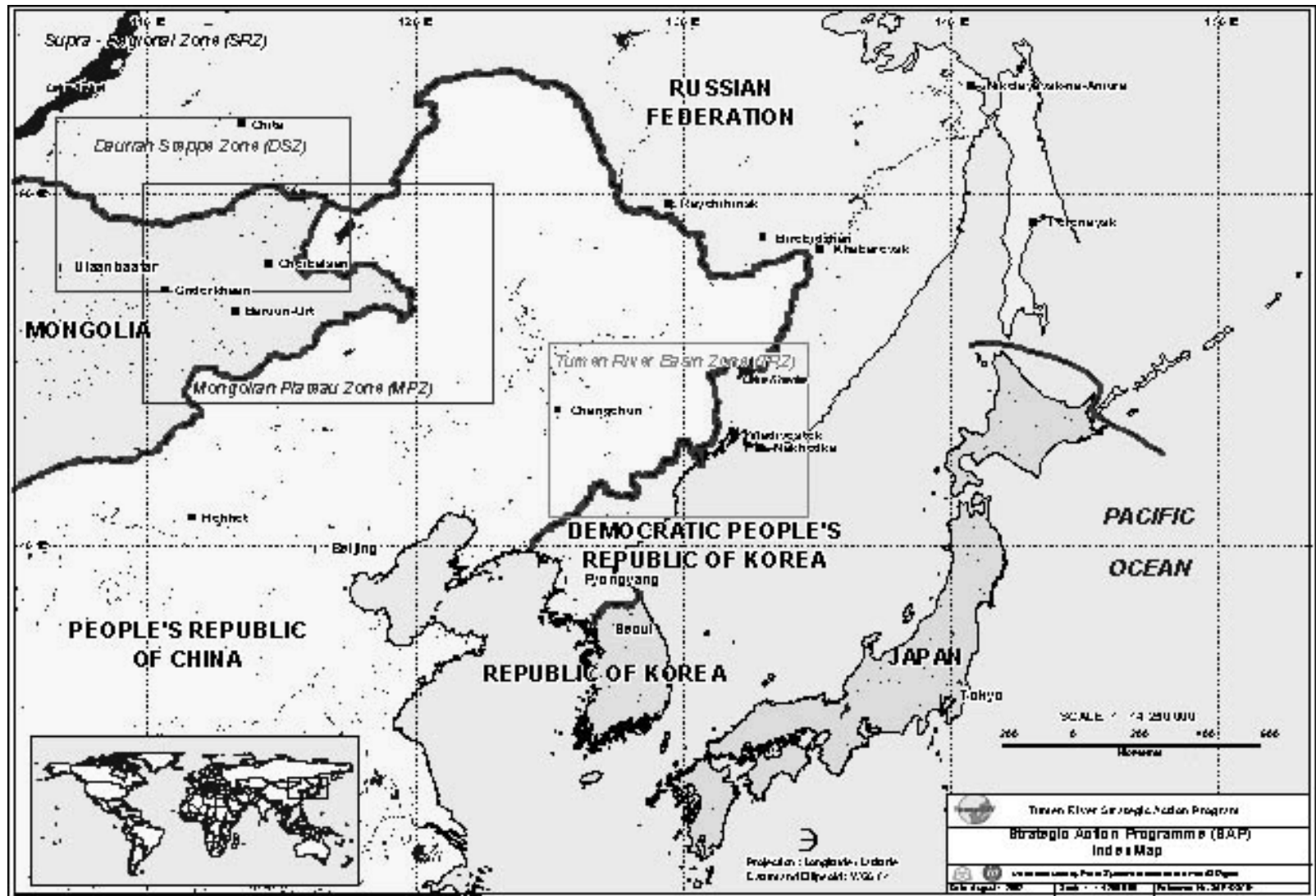
# Comparison of Two Korean Systems

Contents	IA Act	PER System
Level	Project	Plan, Program, Project
Purpose	Mitigation Measure	Site Feasibility, Environment-friendly Development
Project Type	63 Kinds of Project in 17 Project Fields	38 Administrative Plan 20 Kinds of Project
EIS Preparer	Proponent	Proponent
Cases	2153 : 1982-2000 285 : 2001-2002	4,726 : 1994-2000 5,552 : 2000.8-'02

# **Rising Issues**

- Lack in Planning Process**
- Public Conflicts**
- Environmental View of Proponent**
- Confusion of EIA Role**
- Reliability of EIA**
- Disregard of Informal Rules**

# Saemangeum Land Reclamation Project



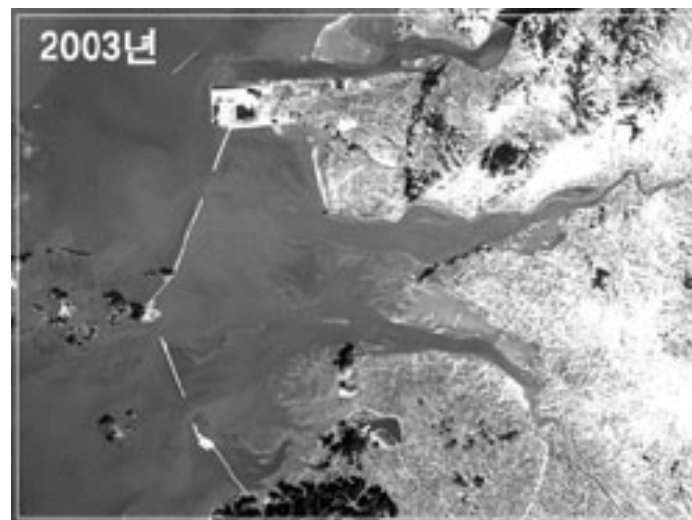
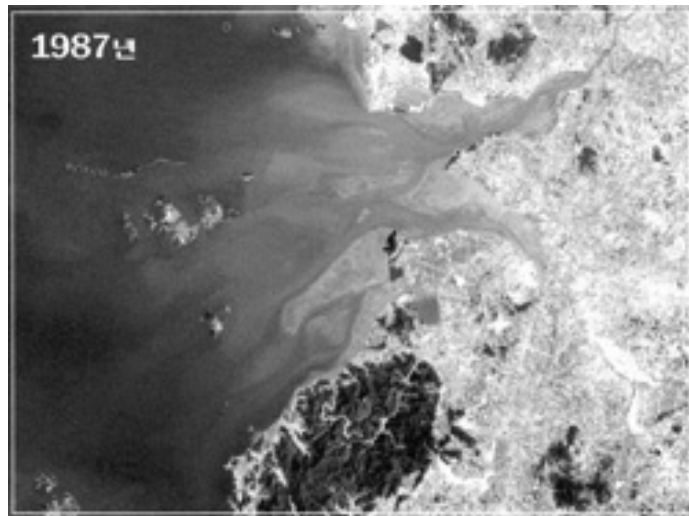
# Saemangeum Land Reclamation Project





# Saemangeum Land Reclamation Project

## Satellite Images by Year



# Saemangeum Land Reclamation Project

**Plan: 1971, Construction Period: Nov. 1991- (after EIA),  
Area: 40,100 ha, Dike: 33km, Budget: 3 billion dollars**



# **Saemangeum Land Reclamation Project**

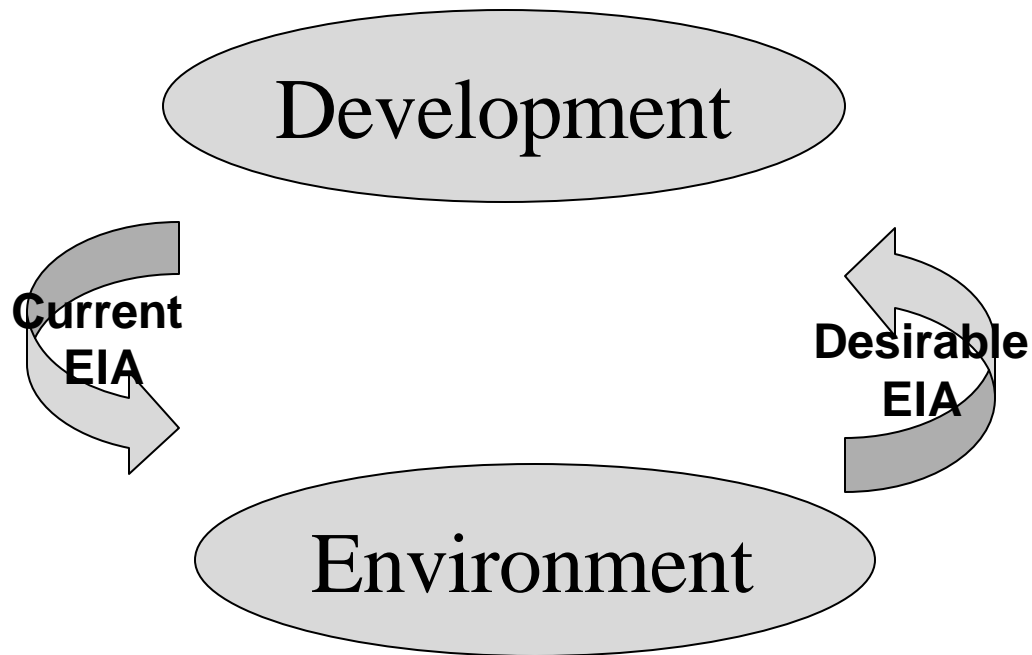
## **Issues**

- Lack of EIA in Planning Process**
- Public Conflicts of Economy**
- Uncertainty of Assessment**
- Difference of Court Decision**
- Political Considerations**
- Conflict of Development and Environment**
- Disregard of Informal Rules**

# **Can SEA Solve it?**

- Who knows it?**
- Conduct Research**
- Obstacles in Institution and Method**
- Who controls?**
- Informal Rules**

# Past, Present and Future?



Ideal Diagram of EIA

# Environmental Ethics

**Extension of  
Human Welfare** ?  
in Korea Birth Myth ?  
4337 Year ?

**Benign and Merciful** ?  
**to the World**  
in the Lotus Sutra ?  
2548 Year ?

?