

# Remote Indigenous Housing in Australia – A Social Assessment

Andrea Jardine-Orr  
Martin Anda

**Remote Area Developments Group**  
Murdoch University, Western Australia



**Remote Area Developments Group**  
Murdoch University • Western Australia



# Presentation Outline

- **Scope of Social Assessment**
- Research Project
- Institutional Mapping
- Soft Systems Methodology & Social Assessment
- Application to Research Project
- Conclusion



Remote Area Developments Group  
Murdoch University • Western Australia



# Scope of Social Assessment

- Mainly single resource-based projects
- Great potential – especially ‘wicked problems’
  - Complex problems
  - Stakeholders do not agree on the ‘problem’
  - No clear right or wrong answer
  - Only better or worse outcomes



Remote Area Developments Group  
Murdoch University • Western Australia



# Presentation

- Scope of Social Assessment
- **Research Project**
- Institutional Mapping
- Soft Systems Methodology & Social Assessment
- Application to Research Project
- Conclusion



Remote Area Developments Group  
Murdoch University • Western Australia





# Research Project

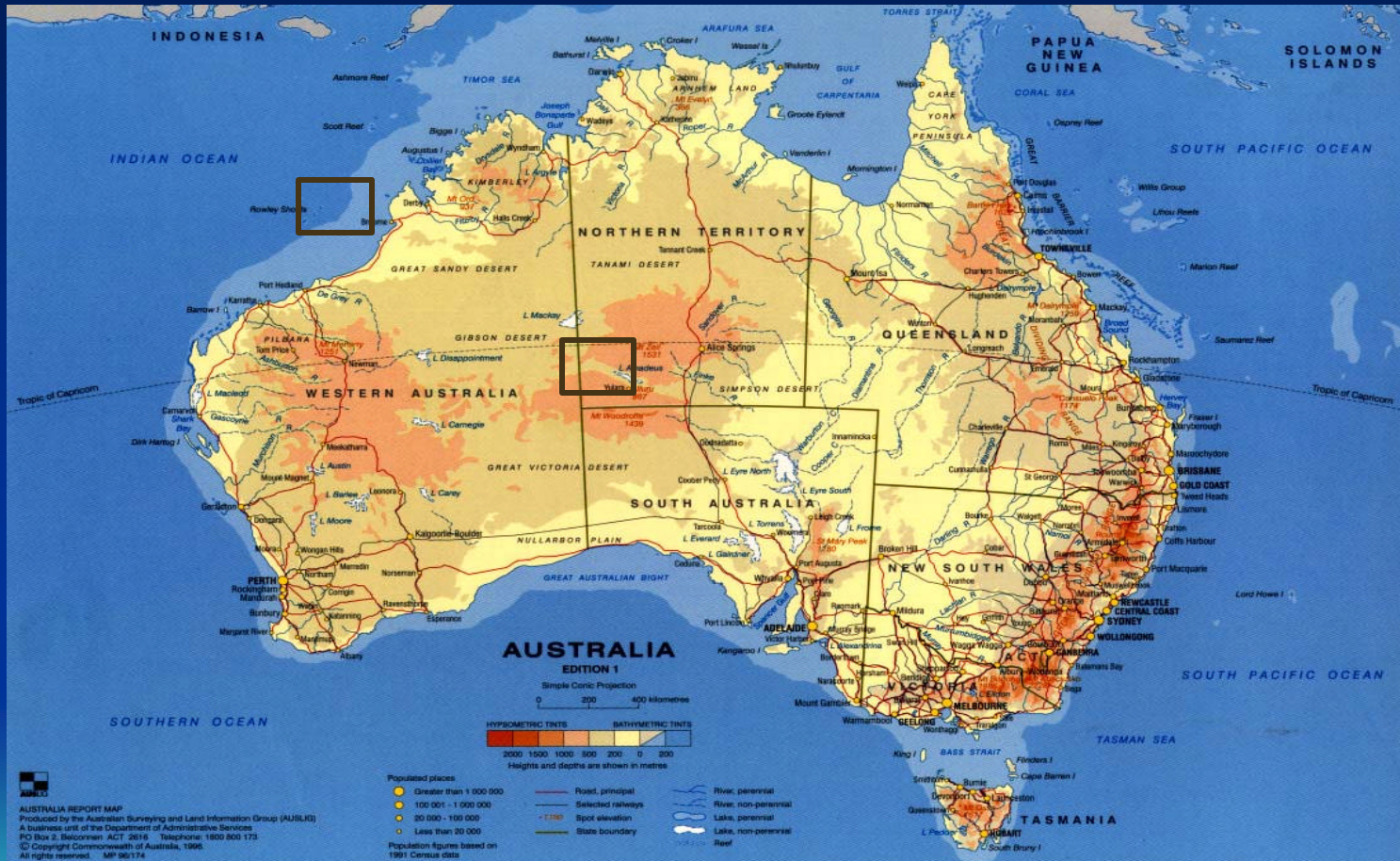
- Remote Indigenous Housing
  - Program Integration
- Method – Social Assessment
- Institutionally complex
- Multi-level analysis
- 2 Case Study Areas



**Remote Area Developments Group**  
Murdoch University • Western Australia



# Case Study Areas



Remote Area Developments Group  
Murdoch University • Western Australia

AHUR





# ‘Levels’ of Research

- Commonwealth Government
- State/Territory Government
- Regional Indigenous Service Providers
- Regional Indigenous Elected Council (ATSIC)
- Communities (2 WA, 2 NT)



Remote Area Developments Group  
Murdoch University • Western Australia

**AHUR**

# Presentation

- Scope of Social Assessment
- Research Project
- **Institutional Mapping**
- Soft Systems Methodology & Social Assessment
- Application to Research Project
- Conclusion



Remote Area Developments Group  
Murdoch University • Western Australia



# Institutional Maps

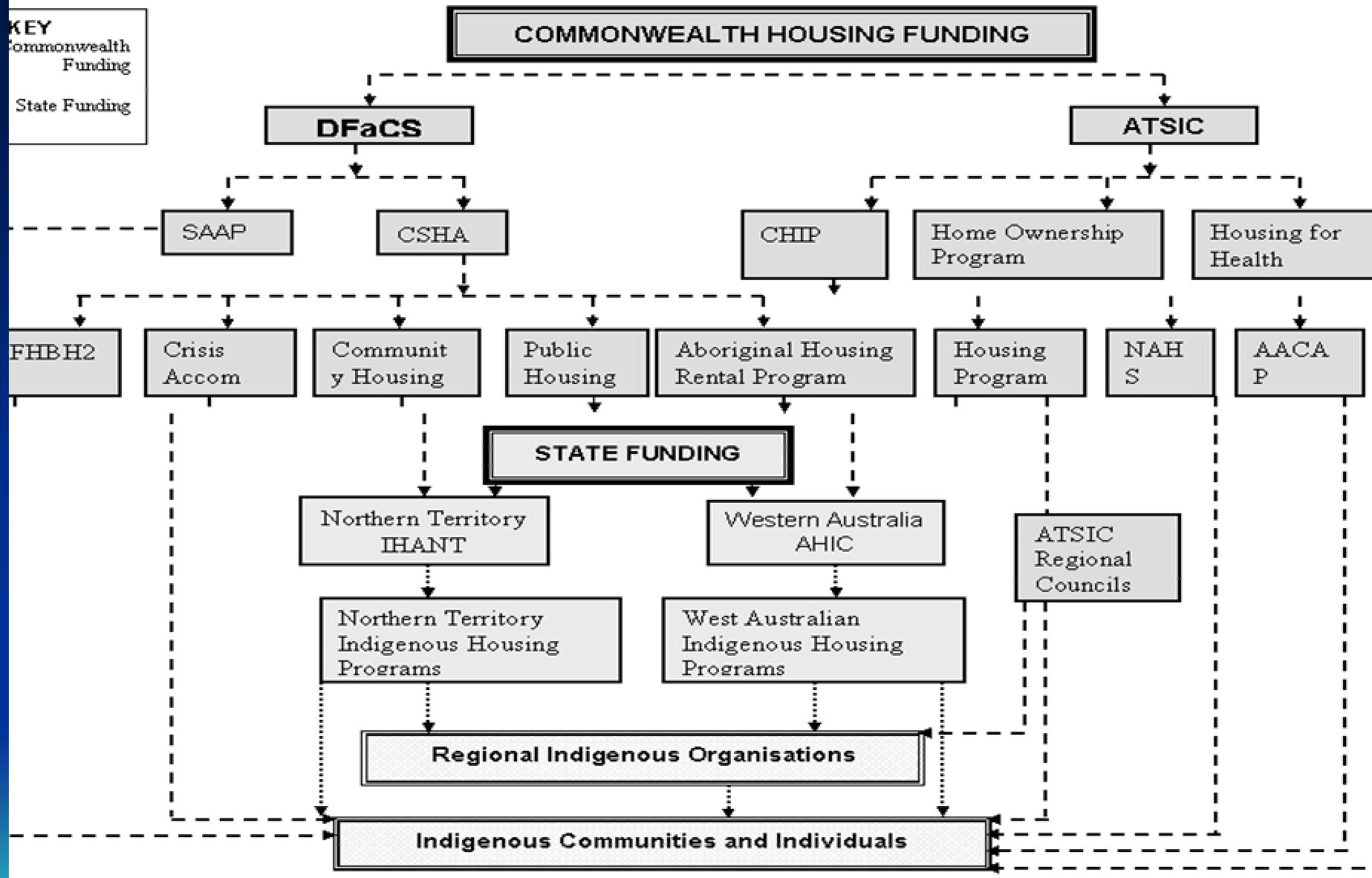
- Interpreting the institutional complexity
  - Different layers and relationships explicit
    - Essential for understanding institutional structure
  - Different purposes
    - existing structures and relationships and
    - research participants' alternative views
- Different types of maps
  - Organisational maps
  - Process maps e.g. flow of funding
- Starting point for discussions, updated
- 4 Examples



Remote Area Developments Group  
Murdoch University • Western Australia



**KEY**  
Commonwealth  
Funding  
  
State Funding



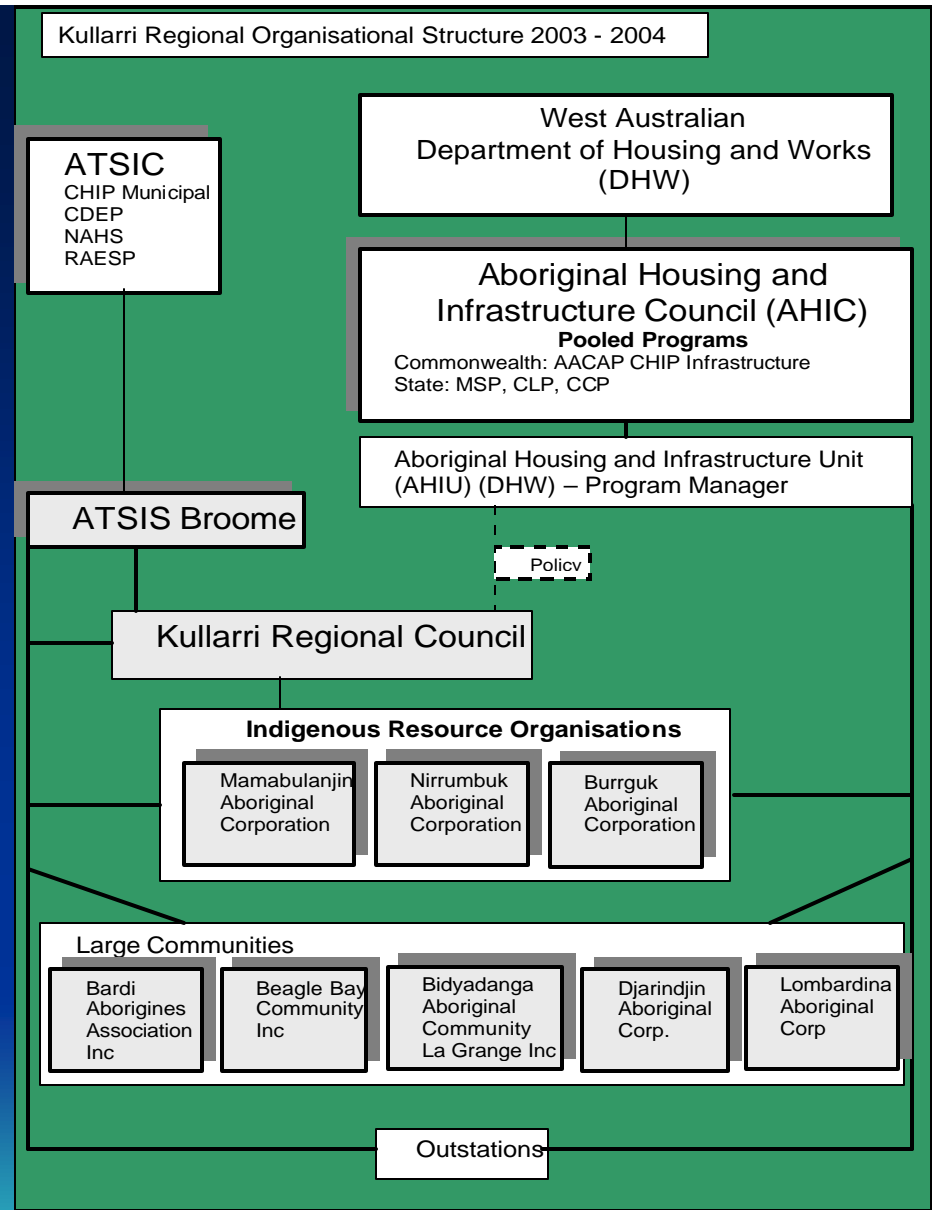
**Remote Area Developments Group**  
Murdoch University • Western Australia







# Regional Organisational Diagram



Remote Area Developments Group  
Murdoch University • Western Australia

AHUR



# Presentation

- Scope of Social Assessment
- Research Project
- Institutional Mapping
- **Soft Systems Methodology & Social Assessment**
- Application to Research Project
- Conclusion



Remote Area Developments Group  
Murdoch University • Western Australia



# SSM and Social Assessment

- Systems thinking – complex entities with interrelated parts
- 1970's 'Hard' Systems applied to 'messy' problems = new field of "Soft Systems"
- Peter Checkland
- Flexible tools – many applications
- Overlap between issues-orientated SA and SSM



Remote Area Developments Group  
Murdoch University • Western Australia



# Soft System Methodology Tools

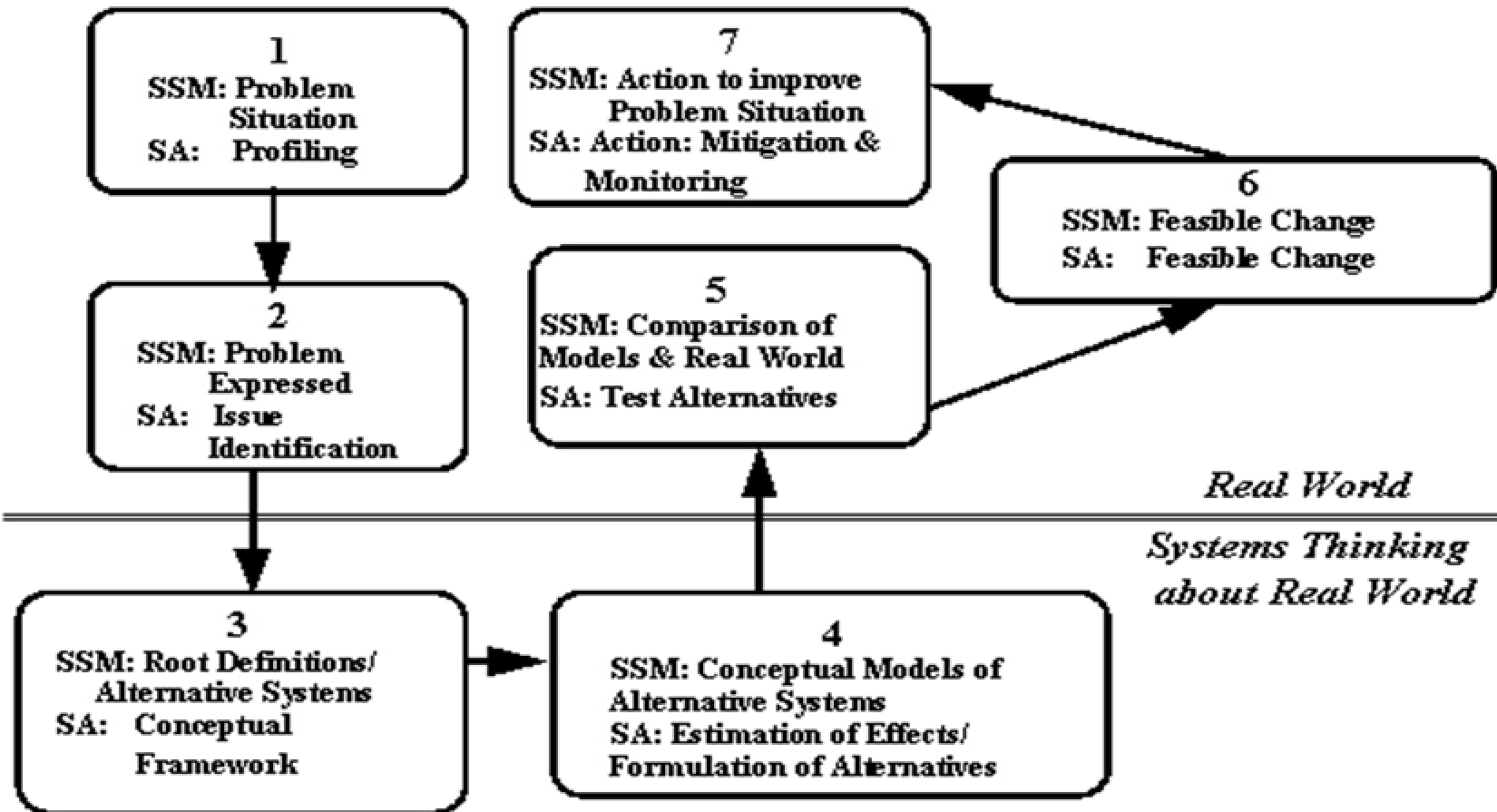
- **C**ustomers of the system
- **A**ctors in the system
- **T**ransformation that occurs in the system
- **W**eltanschauung or world view
- **O**wners of the system
- **E**nvironmental constraints
- **E1** efficacy; **E2** efficiency; **E3** effectiveness



Remote Area Developments Group  
Murdoch University • Western Australia



# SA and SSM



Remote Area Developments Group  
Murdoch University • Western Australia

# Presentation

- Scope of Social Assessment
- Research Project
- Institutional Mapping
- Soft Systems Methodology & Social Assessment
- **Application to Research Project**
- Conclusion



Remote Area Developments Group  
Murdoch University • Western Australia





# Research Project

- Remote Indigenous Housing
- Two Competing views - continuum
  - Prevailing housing supply approach
  - Alternative housing demand approach
- CATWOE and 3 E's applied to each
  - Made problems inherent in 2 approaches explicit
  - Different world views clear
  - 3 E's – neither ideal given constraints
- Workable solution – combination of 2



Remote Area Developments Group  
Murdoch University • Western Australia



# SA, SSM & Research Project

- SSM Useful tools
  - Use as needed
- Tools – assist in structuring alternatives and making implicit issues explicit
- Particularly useful in ‘wicked’ problems -
- See paper for detailed analysis



Remote Area Developments Group  
Murdoch University • Western Australia



# Presentation

- Scope of Social Assessment
- Research Project
- Institutional Mapping
- Soft Systems Methodology & Social Assessment
- Application to Research Project
- **Conclusion**



Remote Area Developments Group  
Murdoch University • Western Australia



# Conclusion

- Social Assessments applicable in many contexts
- Valuable input to examination of complex 'wicked' problems
- SSM provides useful tools for SA to use in complex situations



Remote Area Developments Group  
Murdoch University • Western Australia

